

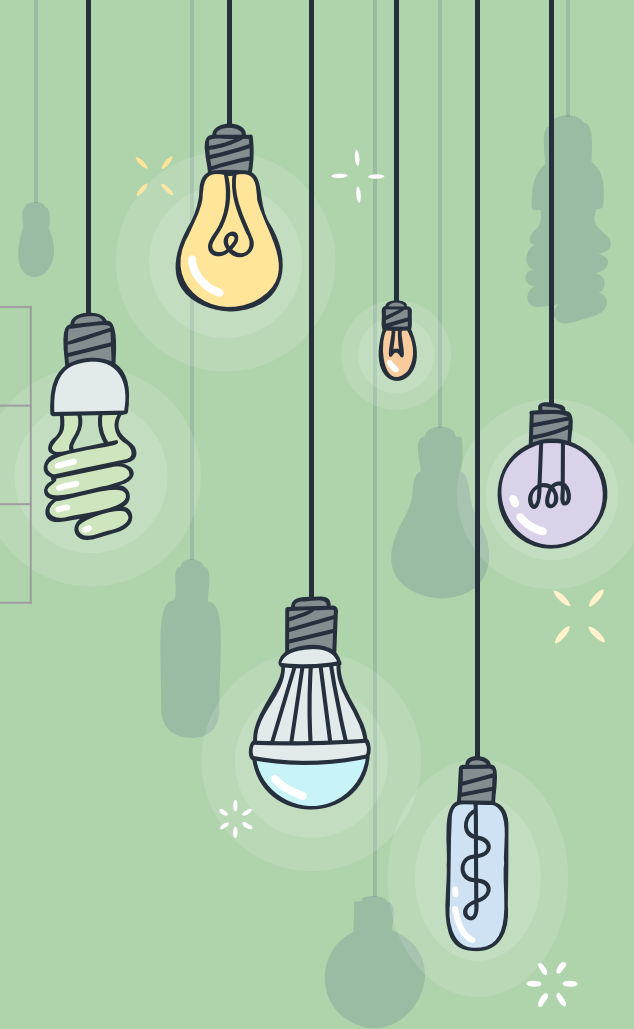


WHAT YOU NEED TO KNOW ABOUT  
NOELANI ELEMENTARY SCHOOL  
23-24 EDITION

# OPEN HOUSE SCHEDULE

Principal Welcome/PTA Meeting	5:45p - 6:25p
Session 1	6:30p - 6:50p
Session 2	6:55p - 7:15p

Principal Gusman will be at the IDEA Center if you want to stop by and check out the building and/or talk story.





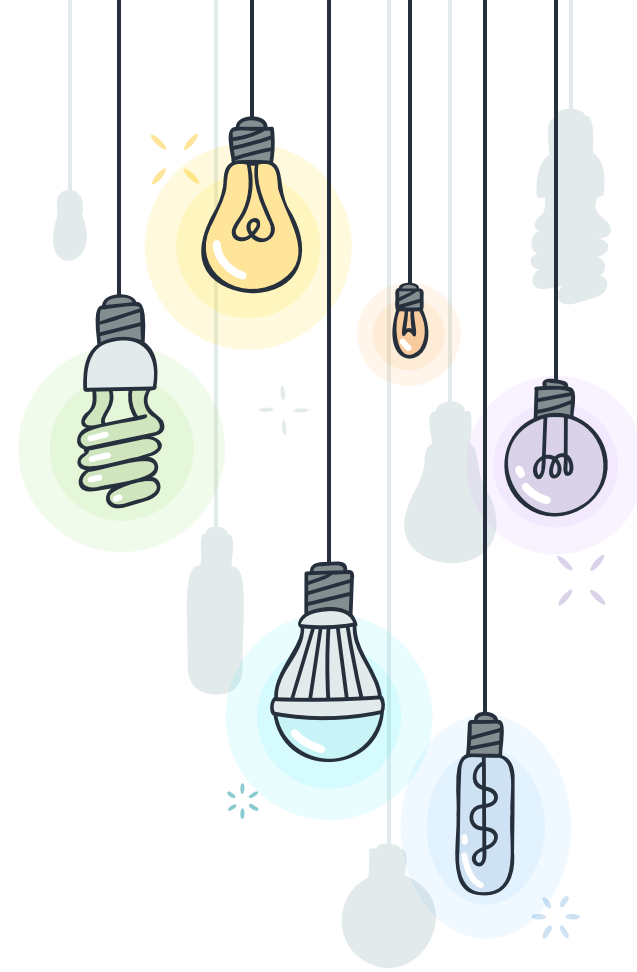
Mr. Stanford Togashi, President

[www.noelanipta.org](http://www.noelanipta.org)

[president@noelanipta.org](mailto:president@noelanipta.org)

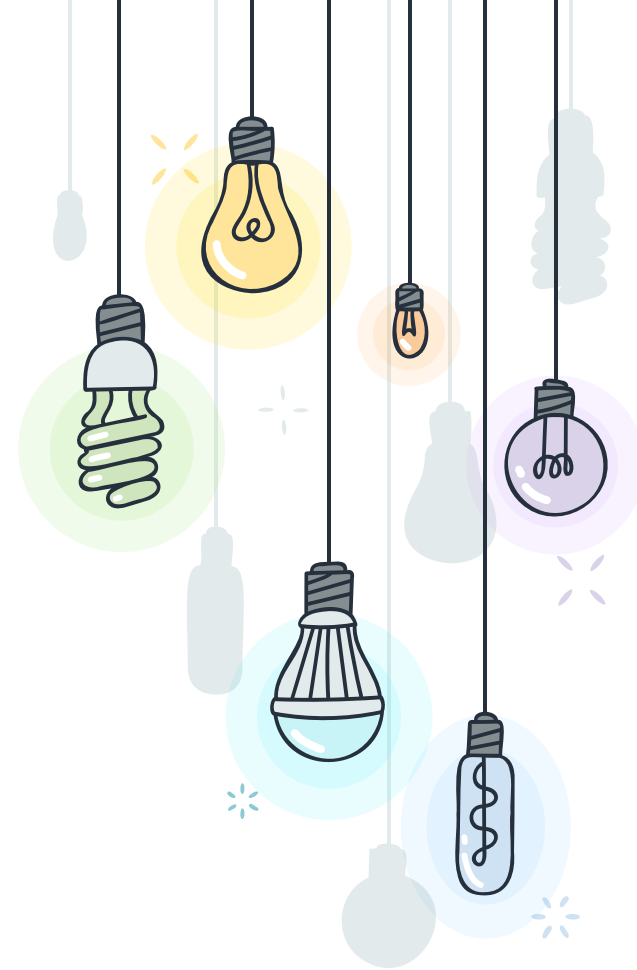
## \* PTA BOARD

- + President - Stanford Togashi
- + Vice President - Kristen Brummel
- + Treasurer - Catherine Pfeffer
- + Secretary - Michelle Isa



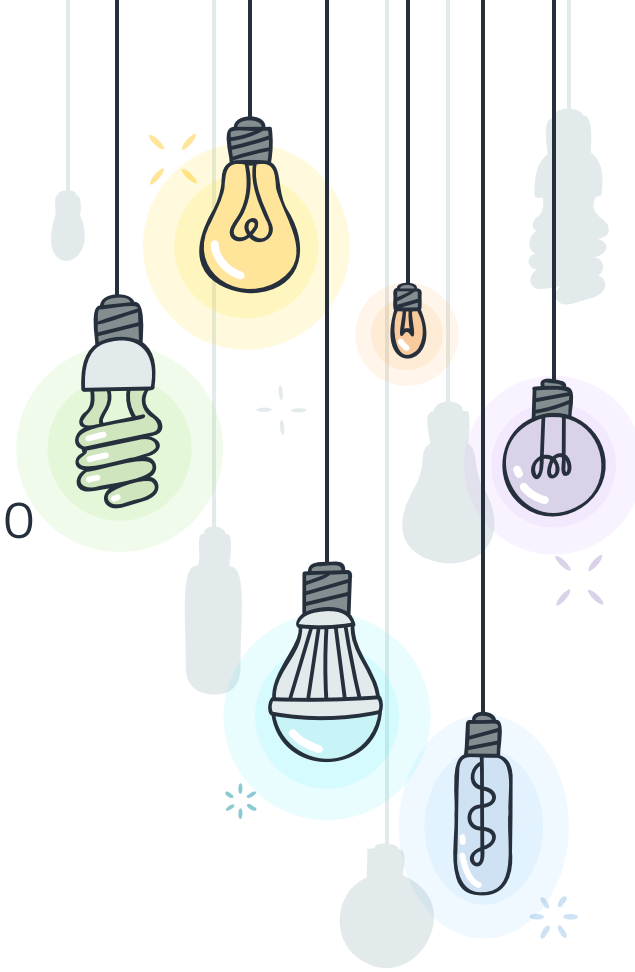
## \* ABOUT THE PTA

- + We are a non-profit, 501(c)(3) organization and a registered member of the Hawaii State PTSA.
- + We facilitate parent and involvement with the school and community.
- + We help to promote school spirit, relationship-building, and **FUN** through PTA-sponsored events
- + The PTA raises funds to supplement the school budget and help purchase much-needed supplies and equipment, assist with projects, and provide additional educational opportunities for our keiki.

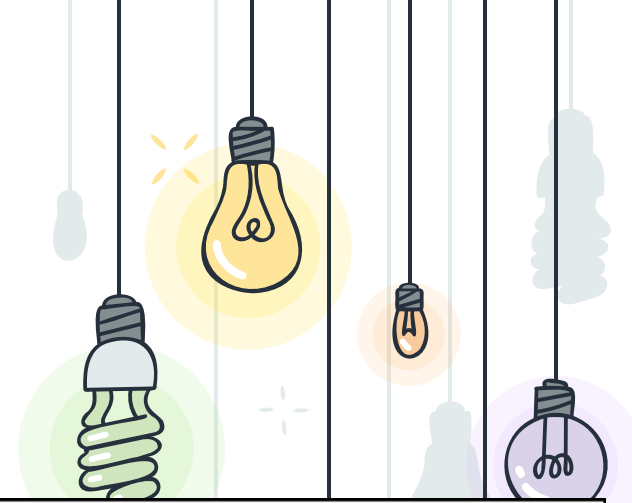


## \* PTA MEMBERSHIP

- + All current Noelani families are members of the PTA.
- + No membership dues required, but you do need register.
- + Look out for the form sent home with your child.



# \* PTA FINANCIALS



## Account Balances as of 6/30/23

<u>Account</u>		<b>6/30/2023</b>	<b>5/31/2023</b>	<u>Difference</u>
<b>Savings Statement Balance</b>	\$	161,839.69	\$ 161,834.90	\$ 4.79
<b>Non-Profit Free Checking Statement Balance</b>	\$	66,119.05	\$ 65,026.05	\$ 1,093.00
<b>Business Checking (Operating) Statement Balance</b>	\$	33,836.10	\$ 39,025.09	\$ (5,188.99)
minus outstanding checks not yet cashed	\$	<u>(5,426.21)</u>		
<b>Actual Business Checking (Operating) Account Balance</b>	\$	28,409.89		
<b>Check Register Balance</b>	\$	28,409.89		
<b>Total Bank Statement Balance:</b>	\$	<b>261,794.84</b>	\$  <b>265,886.04</b>	\$ <b>(4,091.20)</b>
<b>Actual Balance (Bank balance - outstanding checks):</b>	\$	<b>256,368.63</b>		

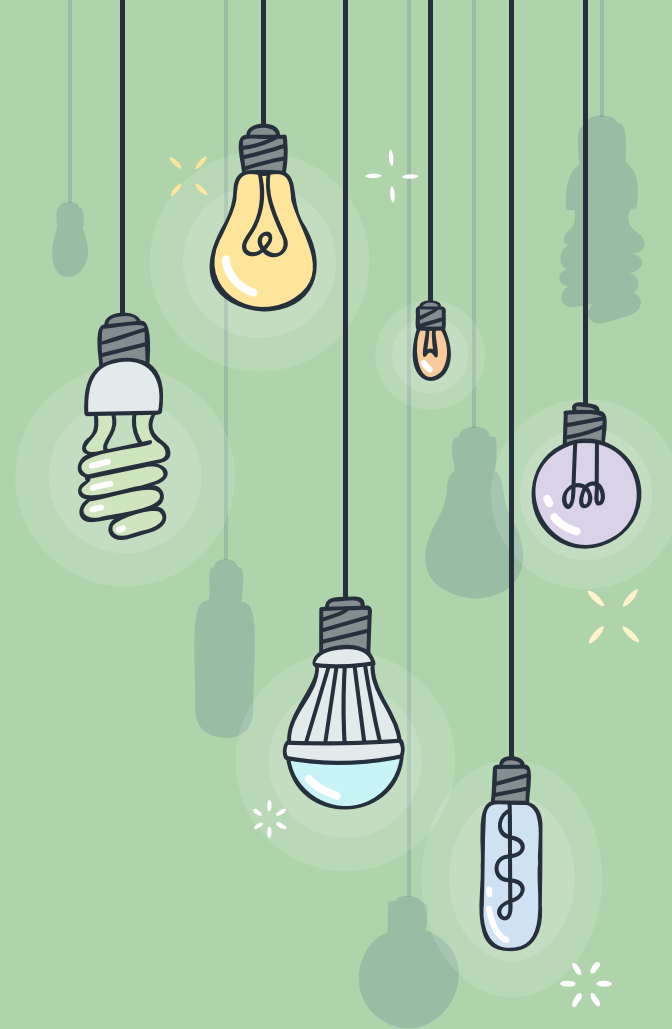
## \* HOW YOU CAN HELP

- + Leading, or shadowing, a committee
- + Financial assistance
- + Lending your expertise on projects, presentations, or events
- + VOLUNTEERING at fundraisers, clean ups, with your child's class or grade level.
- + Attend meetings
- + Support to the PTA can come in many shapes, forms, sizes and we welcome it all!



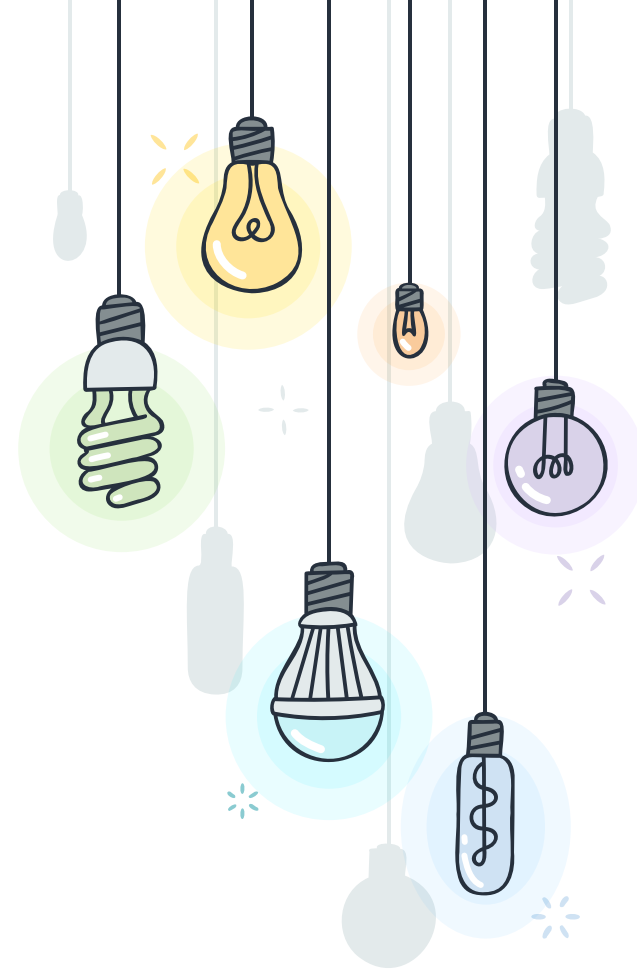


# PTA DOINGS



## \* THE PTA SUPPORTS

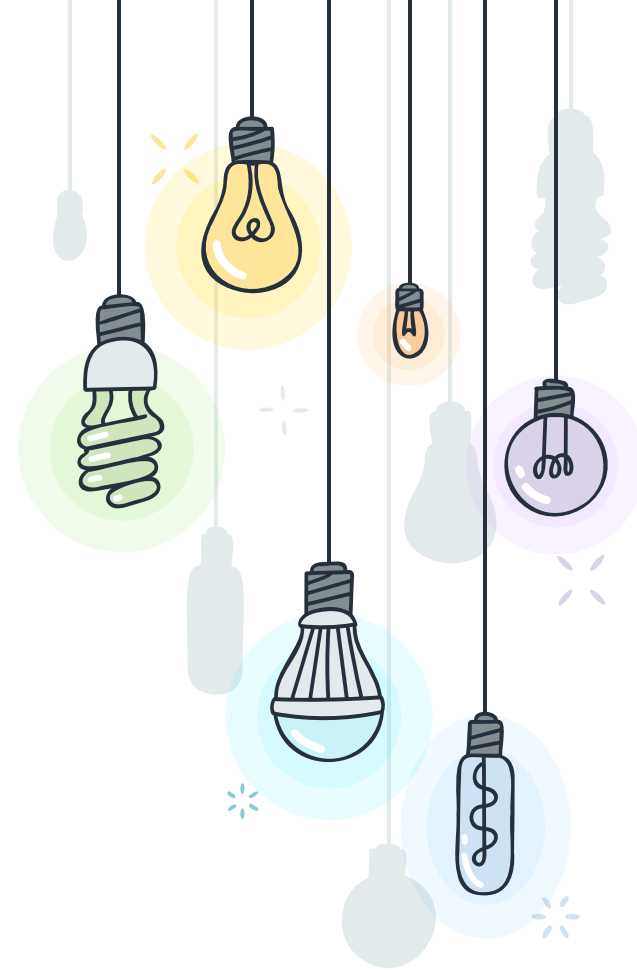
- + Teacher positions (music and PE)
- + The Morning Care Program
- + Designs and creates school t-shirts
- + Purchases tickets to HTY
- + Monetary support to teachers
- + Community building events
- + Supports after school enrichment classes
- + Japanese sister school exchange
- + 4th grade Big Island Trip
- + 5th grade graduation
- + Teacher appreciation
- + Room Parents
- + Supplies and equipment
- + Fundraisers



## \* TRUNK OR TREAT

- + Friday, October 27, 2023
- + Kids (and parents) 5:30p - 7:30p
- + Bentos, Shave Ice, and other fun activities.
- + Trunk or Treating 6:30p - 7:30p

**We will be looking for “trunkers” and “treat” donations. Be on the lookout for information in early October.**



# \* CRAFT FAIR - SATURDAY, NOVEMBER 11, 2023

Craft Fair is a tradition at Noelani which is enjoyed by the Manoa community and beyond. Event is timed to coincide with early Christmas shopping!

- + Vendor Booths
- + Community Booths
- + Food Trucks
- + Keiki Games
- + Alumni Booth

***THIS IS OUR BIGGEST EVENT OF  
THE YEAR!***

**We need YOU to make this a successful event.**

**Be on the lookout for volunteer information.**

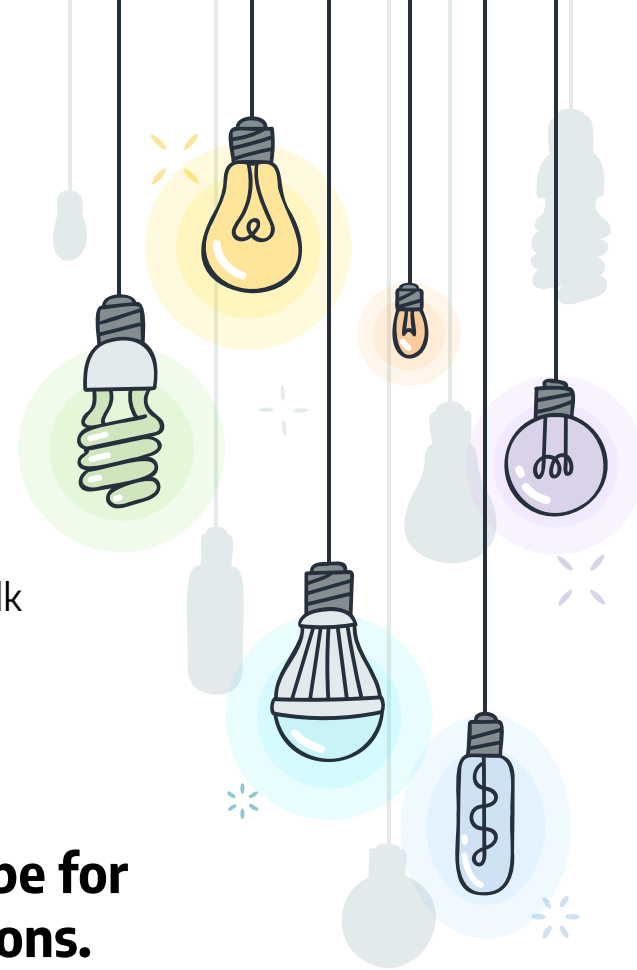


# \* JOGATHON - FRIDAY, FEBRUARY 9, 2024

Students are sponsored by family and friends to jog or walk along a course that winds through the Noelani campus.

- **Helps students appreciate the importance of an active and healthy lifestyle while supporting our physical education program.**
- Nets over \$25K / year in revenue.
- Upper grade levels (3-5) cheer on lower grade levels (K-2) while they run/walk and vice versa.
- All children receive Jogathon t-shirts.

**Jogathon is a pledge based event (think jump rope for heart), so we need your help to bring in donations.**

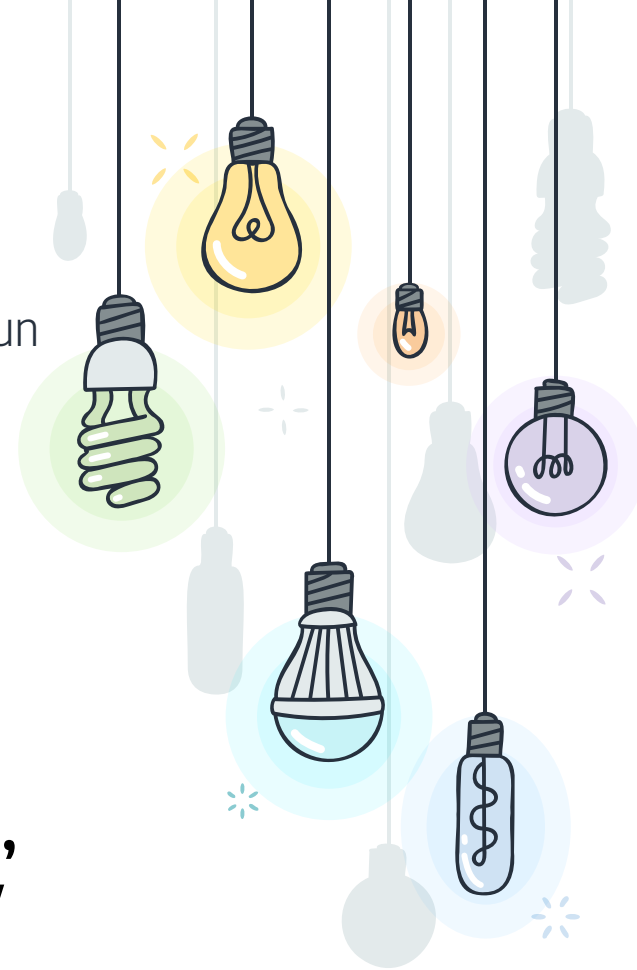


## \* MAY FAIR - FRIDAY, MAY 3, 2024

A combination of a traditional May Day Program along with a fun fair open to Noelani families!

- + Beautiful grade level performances
- + Silent auction
- + Carnival atmosphere with games and activities
- + Nets on average around \$25K

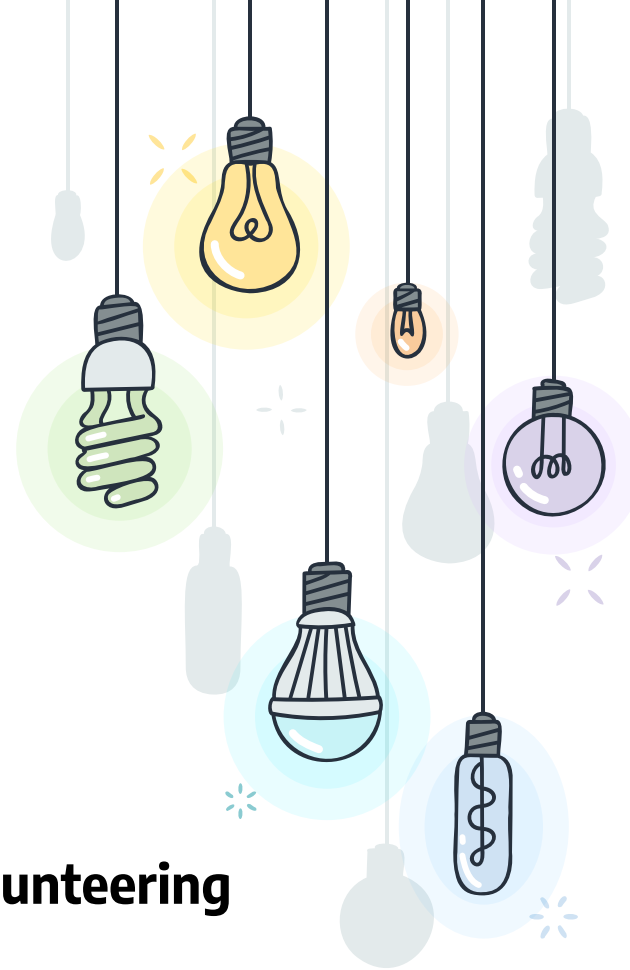
**We need your help to run the games, silent auction, prize booth, and other activities that make this day super fun for the kiddos.**



## \* STAFF APPRECIATION WEEK - MAY 6 - 10, 2024

- + Show our appreciation for the hard work teachers and staff put in for our kiddos.
- + We feel a day is not enough, so instead we do a weeks worth of activities.
- + Meals, gifts, recess supervision...there is not enough we can do.

**Show your support for our teachers and staff by volunteering or through acts of appreciation.**



## \* MONTHLY MEETINGS

Who: Open to everyone

When: 2<sup>nd</sup> Thursday of every month (next meeting 8/10)

Time: 6:00 p.m. – about one hour long

Place: Online via Zoom

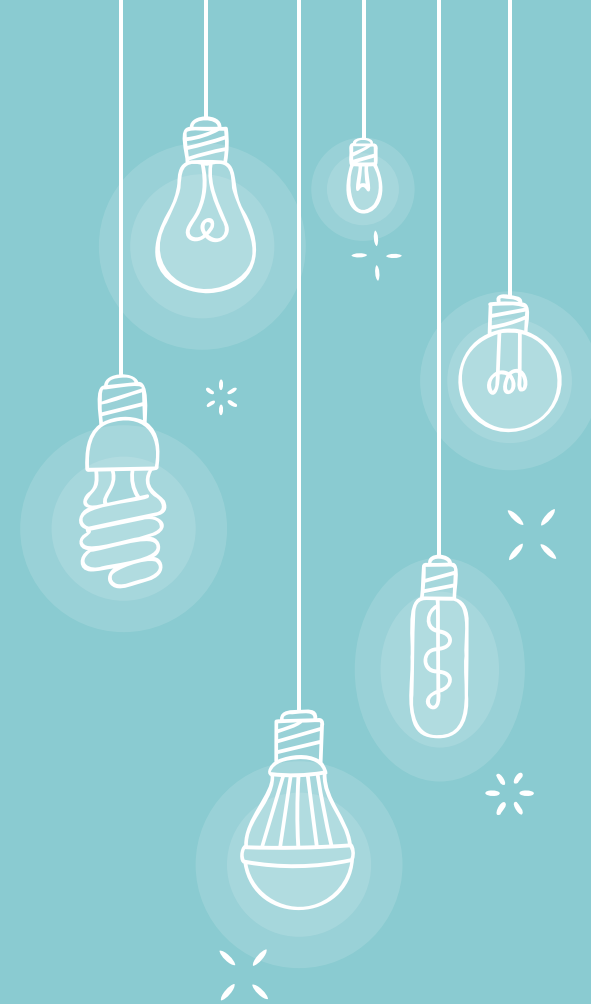
*Our success depends on everyone's involvement. Please attend the monthly meetings.*

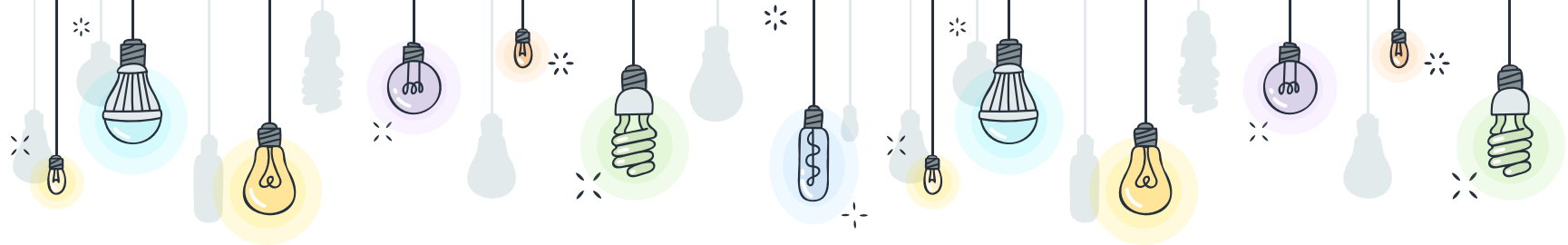






Visit our website at  
**[www.noelanipta.org](http://www.noelanipta.org)**





THANK  
YOU



# NOELANI ELEMENTARY SCHOOL



# FACULTY & STAFF



# \* KINDERGARTEN



**Ms. Chang - B2**



**Ms. Giesseman - PO1**



**Ms. Kuba - B4**



**Ms. Neely - B3**



\* GRADE 1



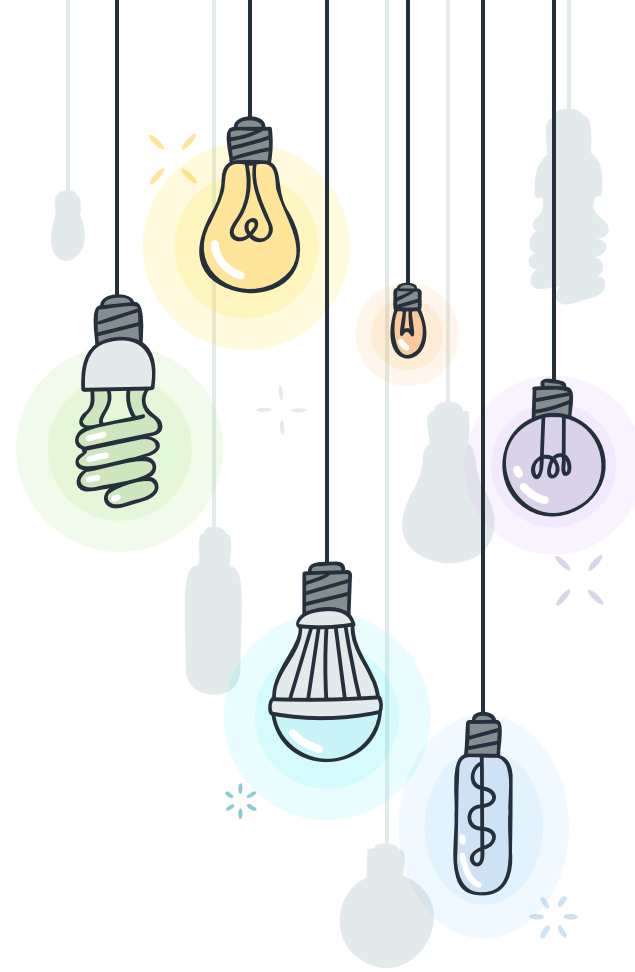
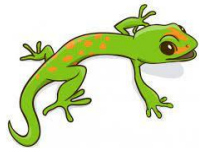
**Ms. Nakamura - B1**



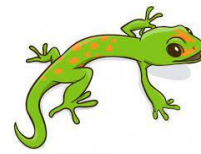
**Ms. Matsui - B5**



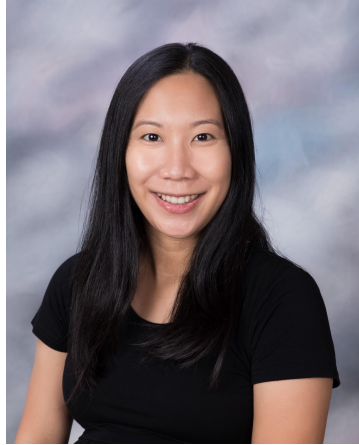
**Ms. Quay - P03**



\* GRADE 2



**Ms. Shigaki - B6**



**Ms. Yoshimoto - B7**



**Ms. Nakagawara - PO3**



\* GRADE 3



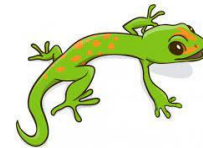
**Ms. Barilla - A2**



**Mr. Nakayama - A3**



**Ms. Kuroda - A4**





\* GRADE 4



**Ms. Ho - A5**



**Mr. Fukushima - A6**



**Ms. Gonsalves - A12**



✧ GRADE 5



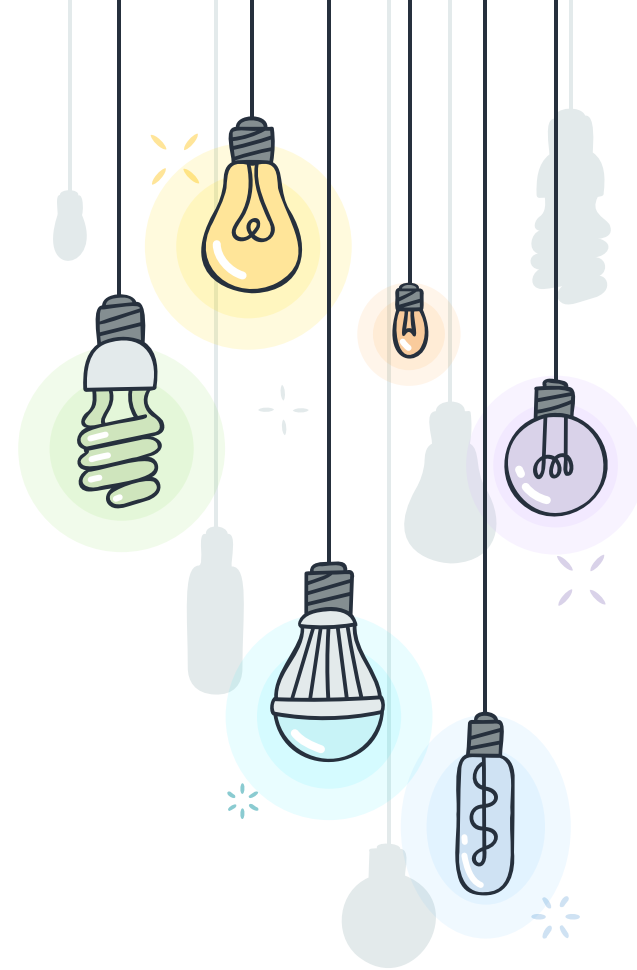
**Mr. Sakamoto - A7**



**Ms. Chang - A8**



**Mr. Higa - A9**



✨ KOKUA



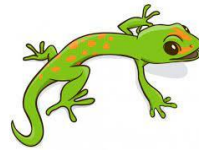
**Ms. Crawford - PO2**



**Ms. Nacion - A1**



**Ms. McCurdy - A10**





## \* EDUCATIONAL ASSISTANTS



**Ms. LaPierre**



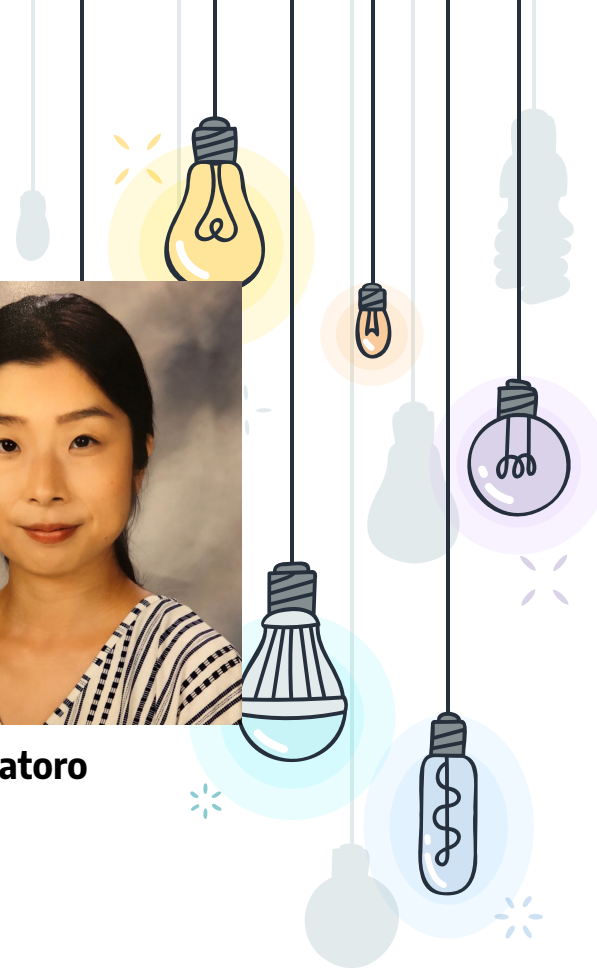
**Ms. Chung**



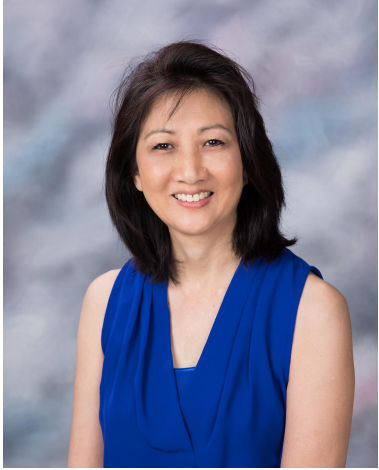
**Ms. Ogimoto**



**Ms. Vilatoro**



\* SPECIALS



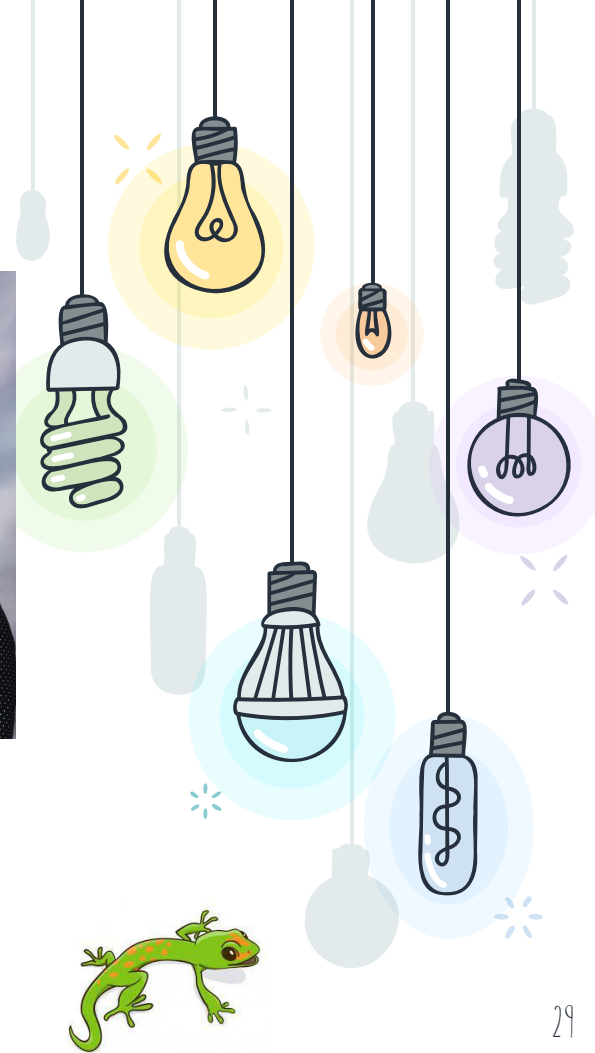
**Ms. Graham**  
**Library**



**Mr. Lam**  
**STEM**



**Mr. Kiyokane**  
**GT/Computer  
Science**



\* NCTs



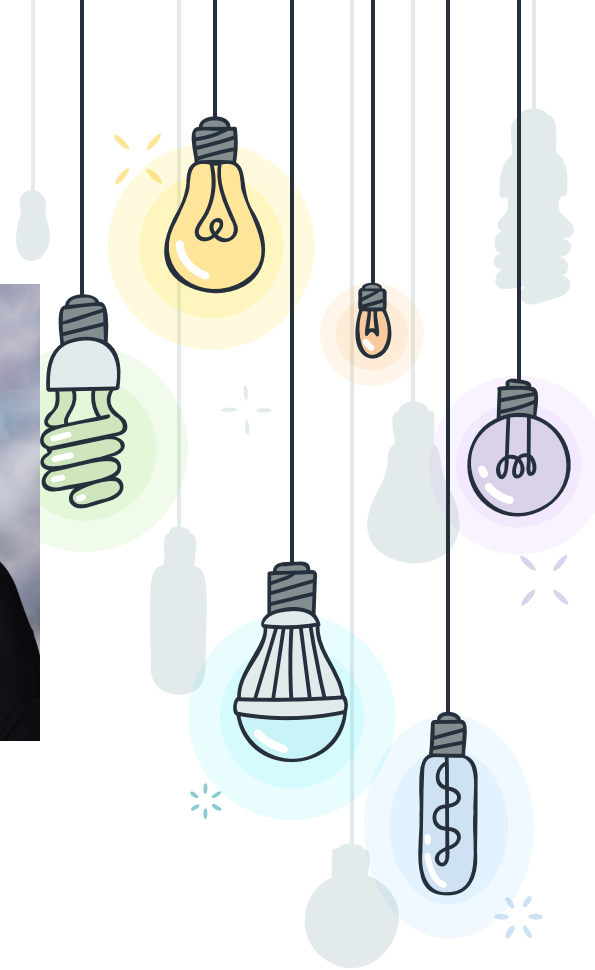
**Ms. Murakami**  
**EL**



**Ms. Okuda**  
**SSC**



**Ms. Yamane**  
**Counselor**



\* SPECIALS CONT.



**Makua Crabbe**  
**Hawaiiana**



**Mr. Benjamin**  
**Music**



**Ms. Lum**  
**PE**



✧ OFFICE



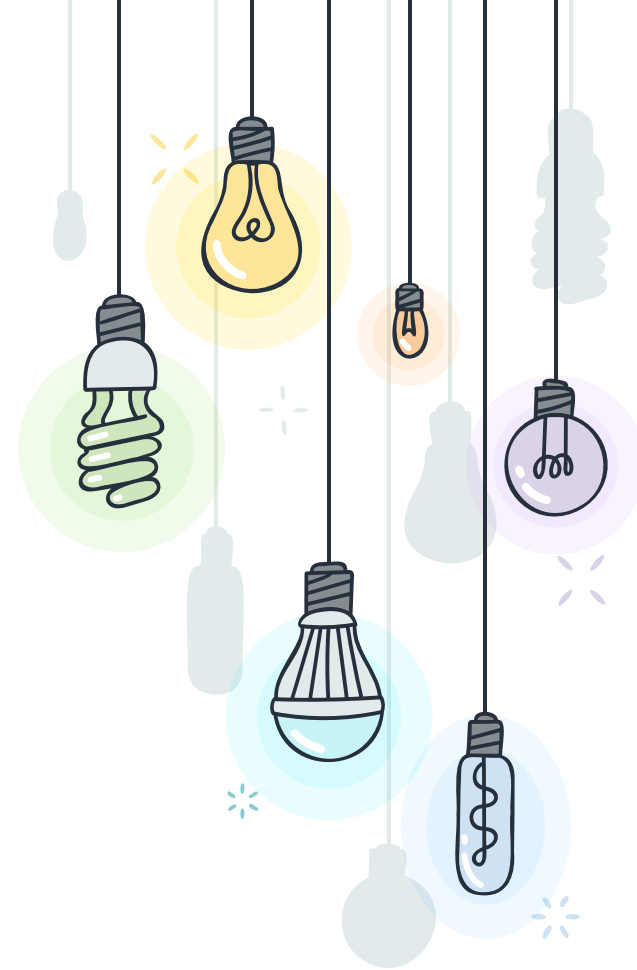
**Ms. Ishii  
SASA**



**Ms. Nagamine  
Office Assistant**



**Ms. Nakamoto  
Health Aide**



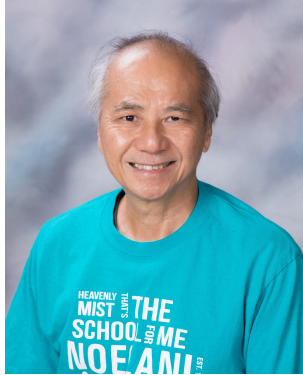




# \* CUSTODIANS



**Mr. Whaley**  
Head Custodian



**Mr. Tu**



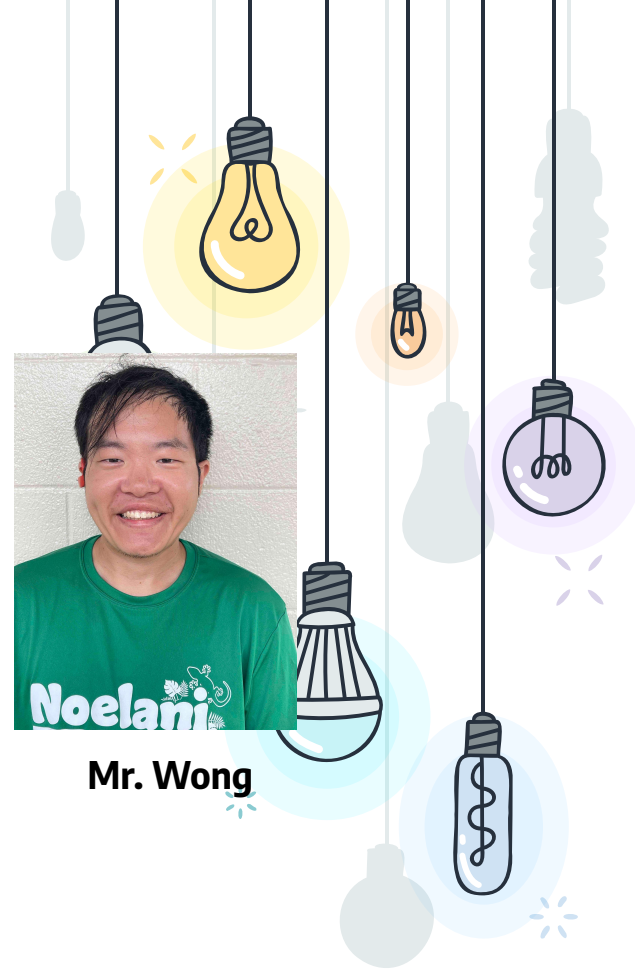
**Mr. Ong**



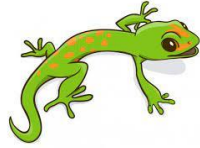
**Ms. Anchetta**



**Mr. Wong**



\* CAFETERIA



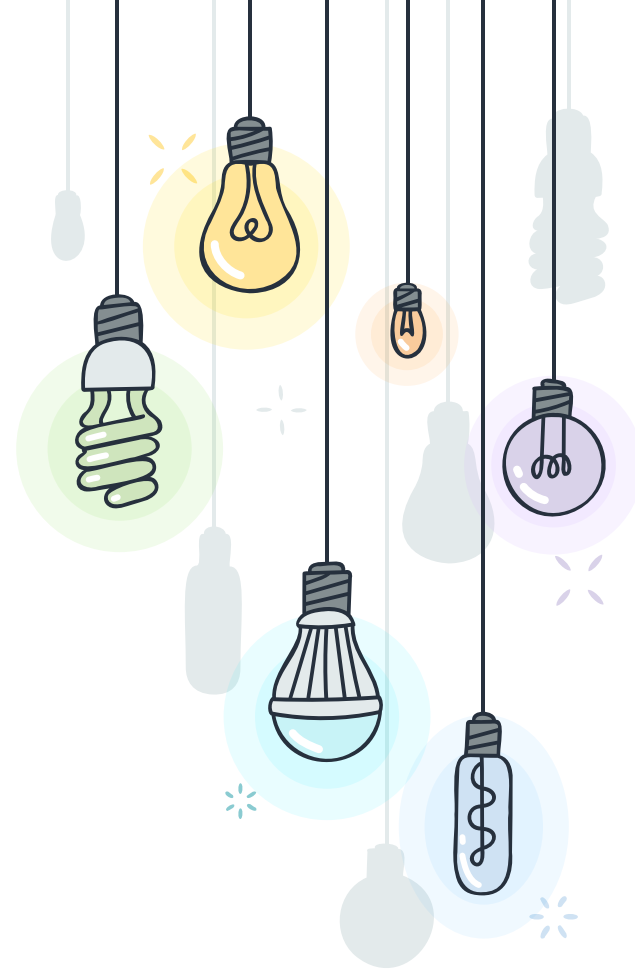
**Ms. Joy  
SFSM**



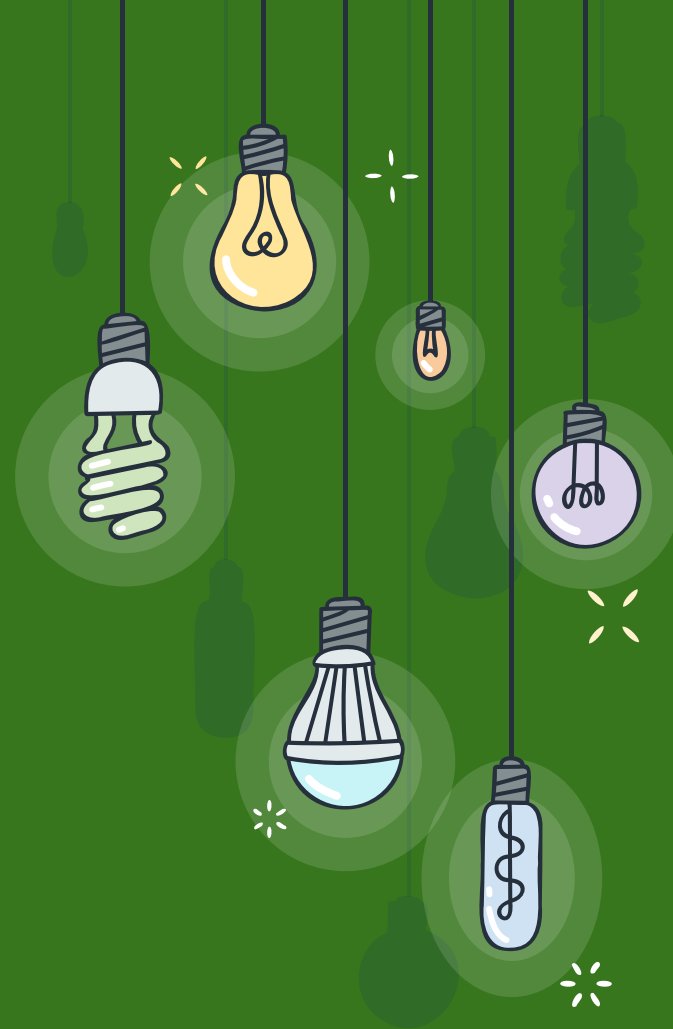
**Mr. Kwock  
Cook**



**Mr. Nagasawa  
Baker**

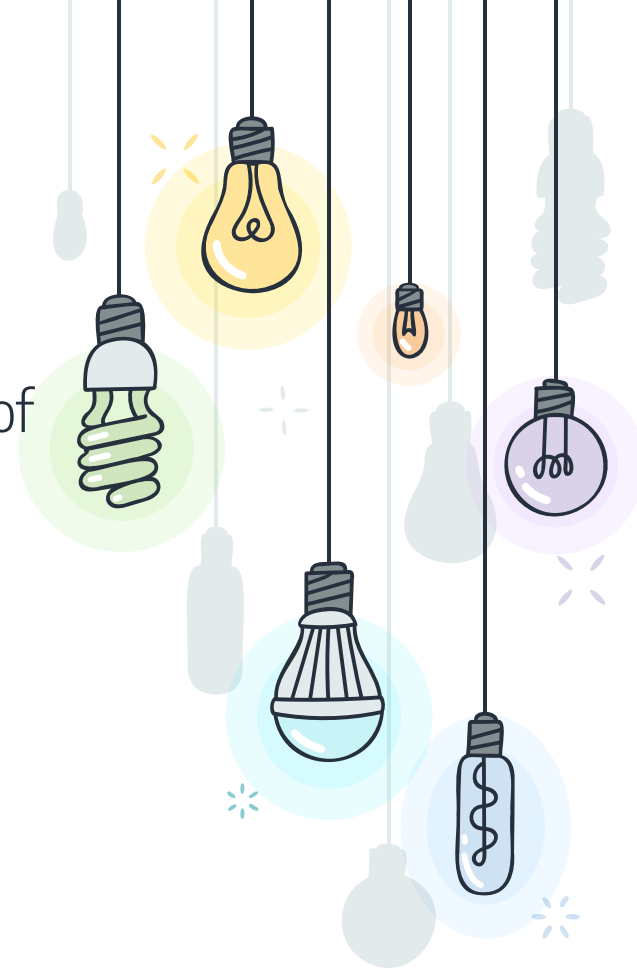


# OUR GOALS



## \* WE STRIVE TO:

- + Partner with you in the development of your child.
- + Create a kind and nurturing environment in and out of the classroom.
- + Communicate with your family.
- + Listen to your compliments, ideas, and concerns.
- + Be better today than we were yesterday.

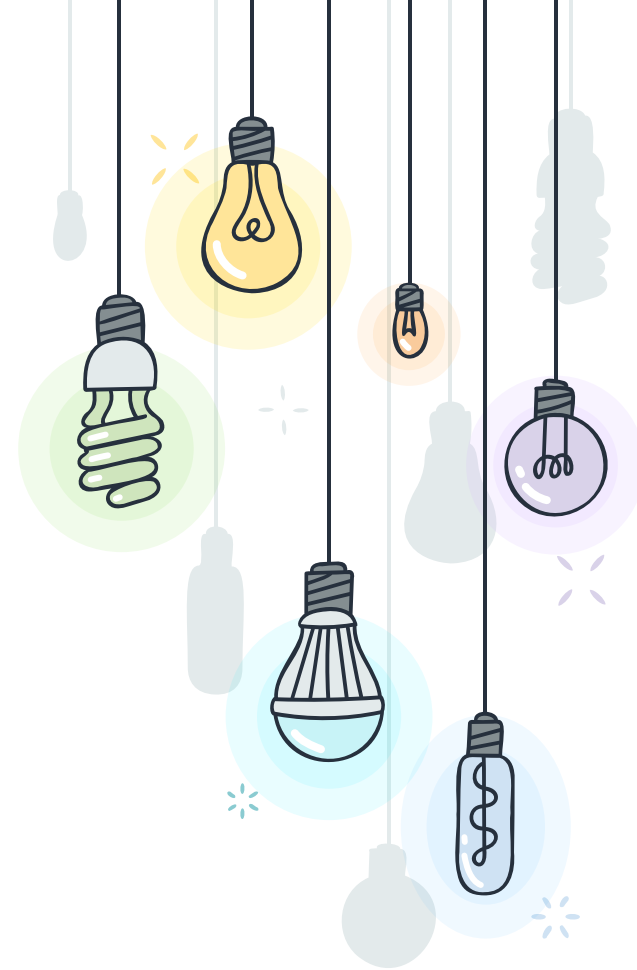


WHAT'S NEW?



# WHAT'S NEW

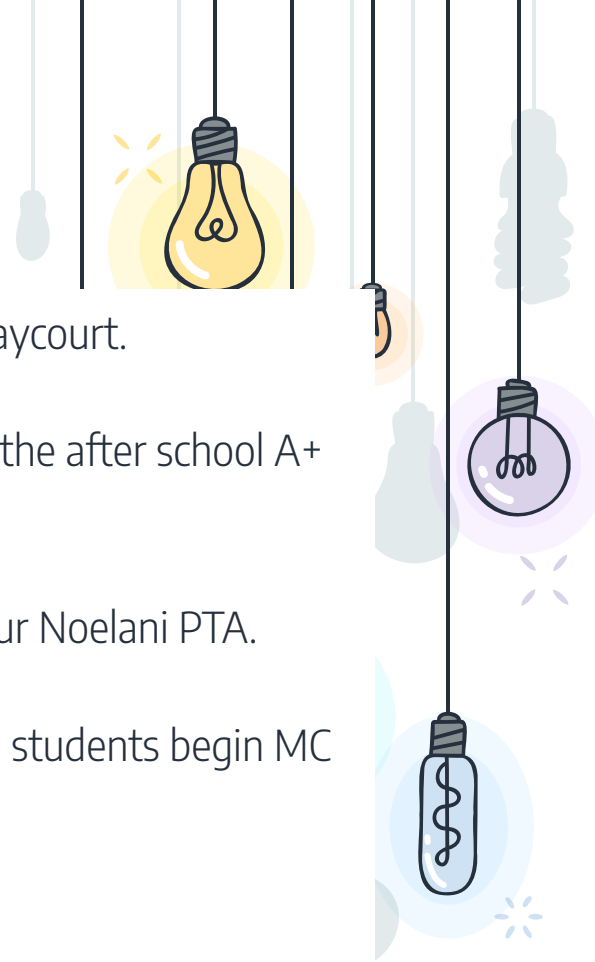
- ✦ Our phone number is now **(808) 307- 8800**
- ✦ We have PTA Sponsored Morning Care from 7:00a - 7:45a. See our website for details.
- ✦ The Attendance, Tardy, and Early Release online request will be up and running on our website - [www.nes.k12.hi.us](http://www.nes.k12.hi.us)
- ✦ Notification blog



## \* MORNING CARE

- + For K-5 students who prefer movement in the morning rather than sitting in the cafeteria or breezeway.
- + You must register and pay the \$150/quarter fee.
- + Registration is online via the Noelani website.
- + First come, first served. We have 60 slots available.

- + Is located at the Playcourt.
- + Is SEPARATE from the after school A+ Program.
- + Is sponsored by your Noelani PTA.
- + Note: Kindergarten students begin MC on August 14, 2023



# \* COMMUNICATION BLOG

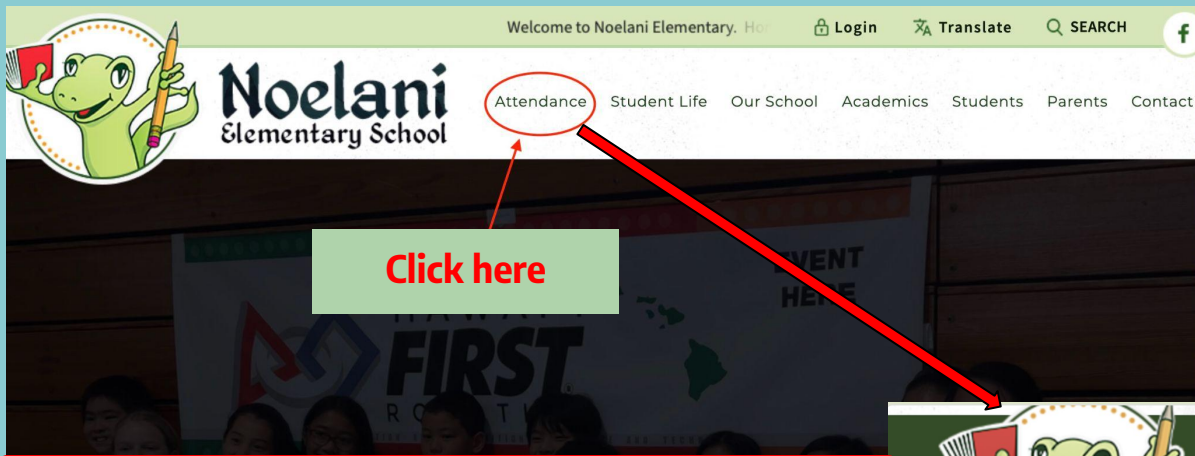


OR - Find the link on the home page (scroll down)



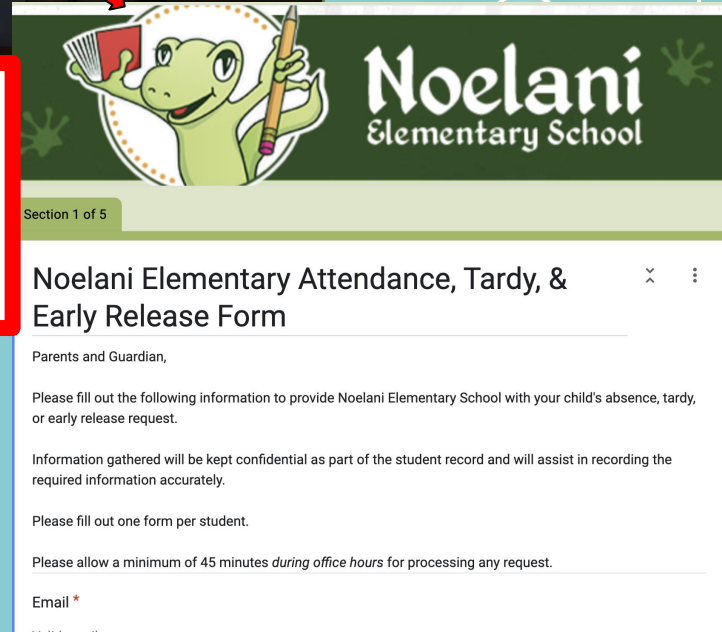
Communication 2022-2023  
NES Communication Blog 23-24



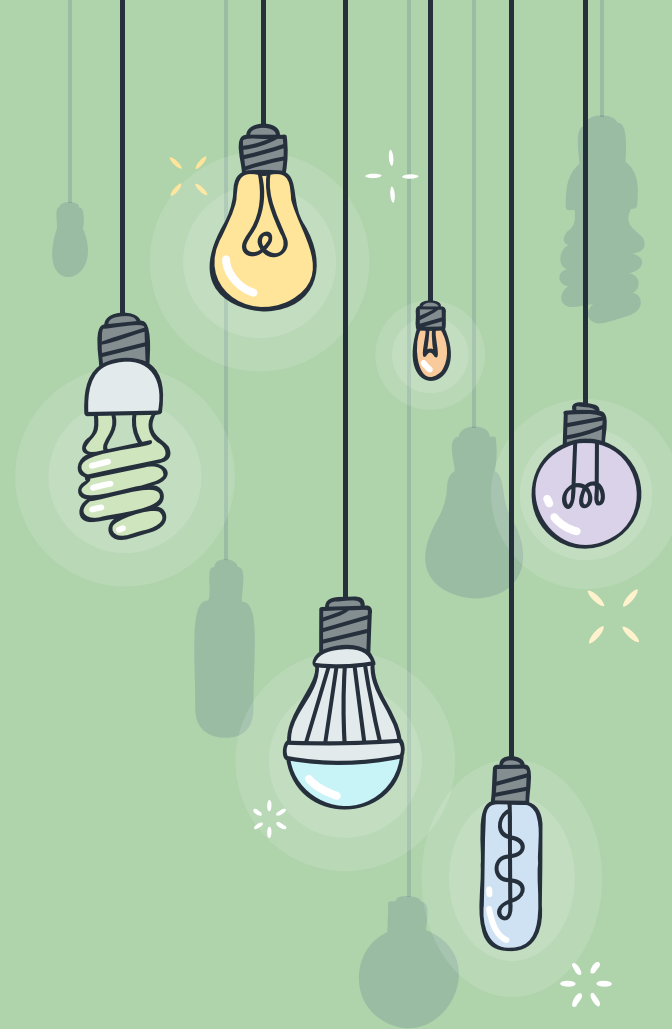


**This is the preferred method of reporting students who are absent, tardy (due to appointment), or requesting an early release from school.**

**You can call (808) 307-8800 if needed.**



# SPECIAL CLASSES



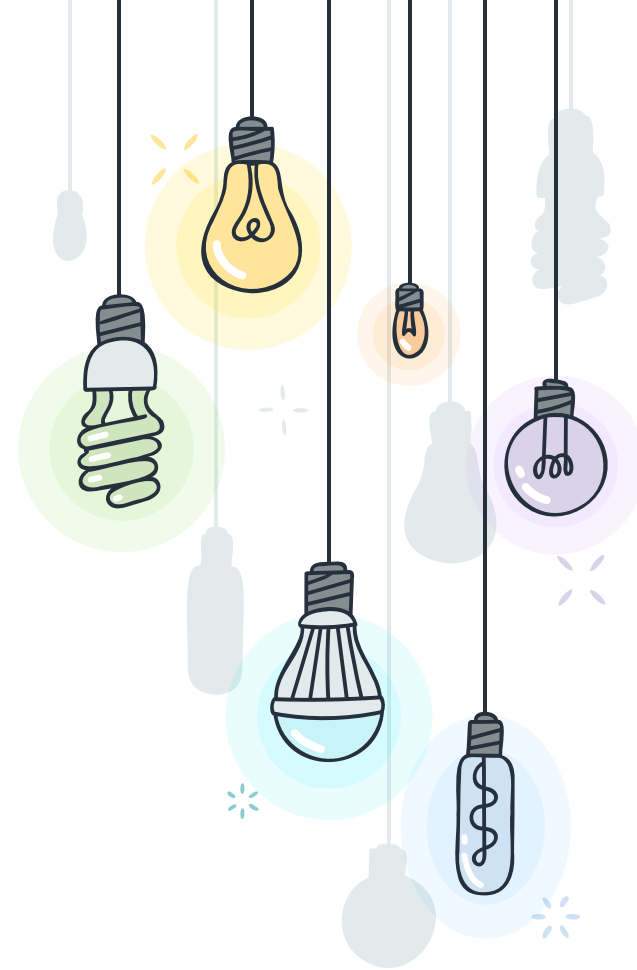
# \* SPECIALS

## **PTA Sponsored**

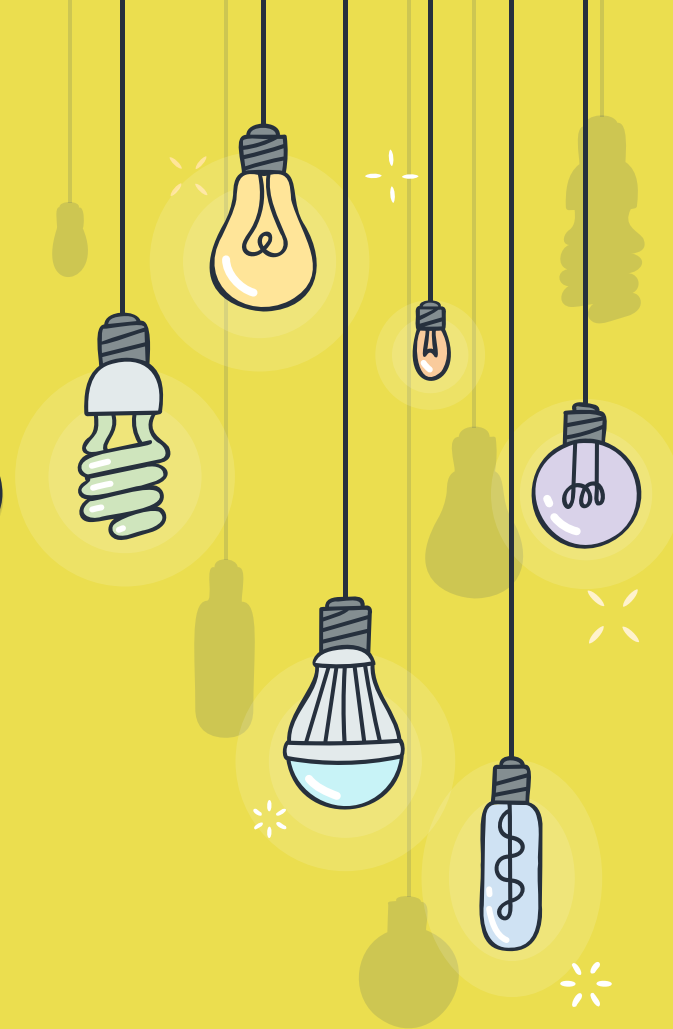
- x Music**
- x PE**

## **School Sponsored**

- x Hawaiiiana**
- x Library**
- x STEM/Computer Science**
- x Social Emotional Learning**

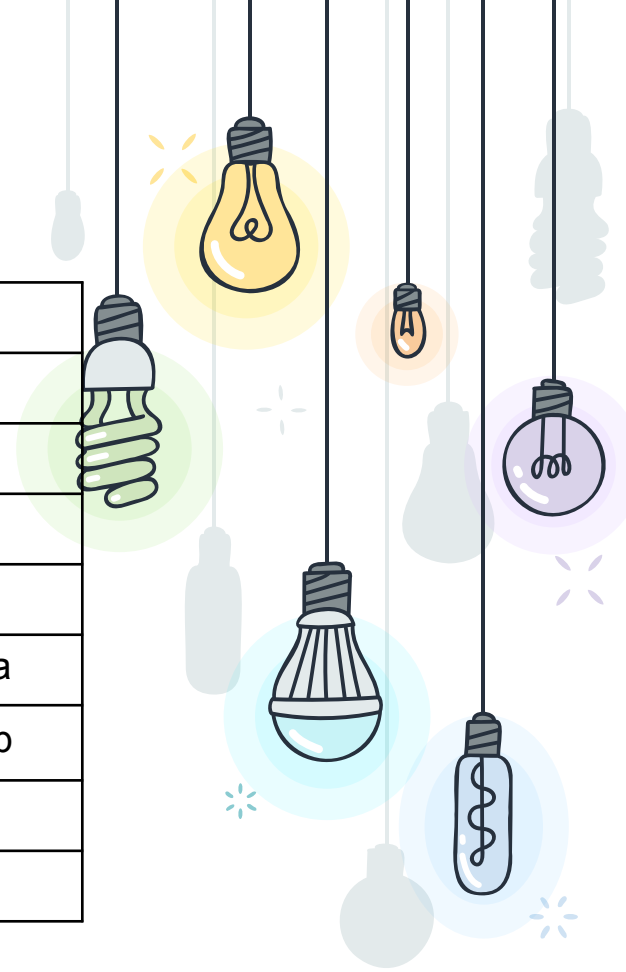


# SCHOOL PROCEDURES

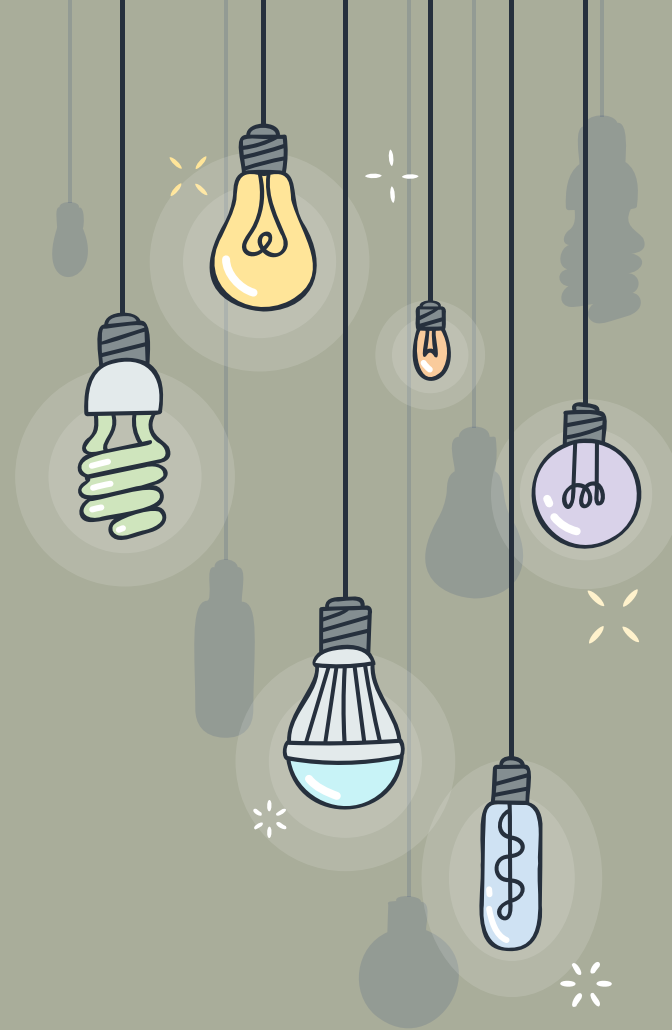


# \* BELL SCHEDULE

<b>Campus Opens/Morning Care</b>	7:00 AM	
<b>Earliest Time to go to class</b>	7:45 AM	
<b>Start of School</b>	8:00 AM	
<b>Tardy Bell</b>	8:05 AM	
<b>Morning Recess</b>	9:45 AM - 10:00 AM	
<b>Lunch &amp; Recess</b>	Grades PK - 2	11:00a - 11:45a
	Grades 3 - 5	11:45a - 12:30p
<b>End School - M,T,Th,F</b>	2:15 PM	
<b>End School - Wednesday</b>	1:30 PM	



MORNINGS



# MORNINGS

## ☀️ Daily School Schedule

8:00a - 2:15p (M, Tu, Th, F)

8:00a - 1:30p (W)

Campus opens at 7:00am

Look for the signs - Do not stand in front of classes until 7:45a

If tardy (after 8:05a); go to the office.

If absent, use our website or call (808) 307-8800

Office Hours: 7:30a - 4:00p



## \* MORNINGS CONT.

- There is no adult supervision before school other than at Morning Care.
- Students are not allowed to play on the school grounds or playground equipment (even w/parents).
- From 7:00 am students must wait in the cafeteria, breezeway near the A-building/multi-purpose building, or be registered at Morning Care until 7:45 am.
- Once a child is dropped off at school, they are are not allowed to leave campus without permission.





## \* DROP OFF

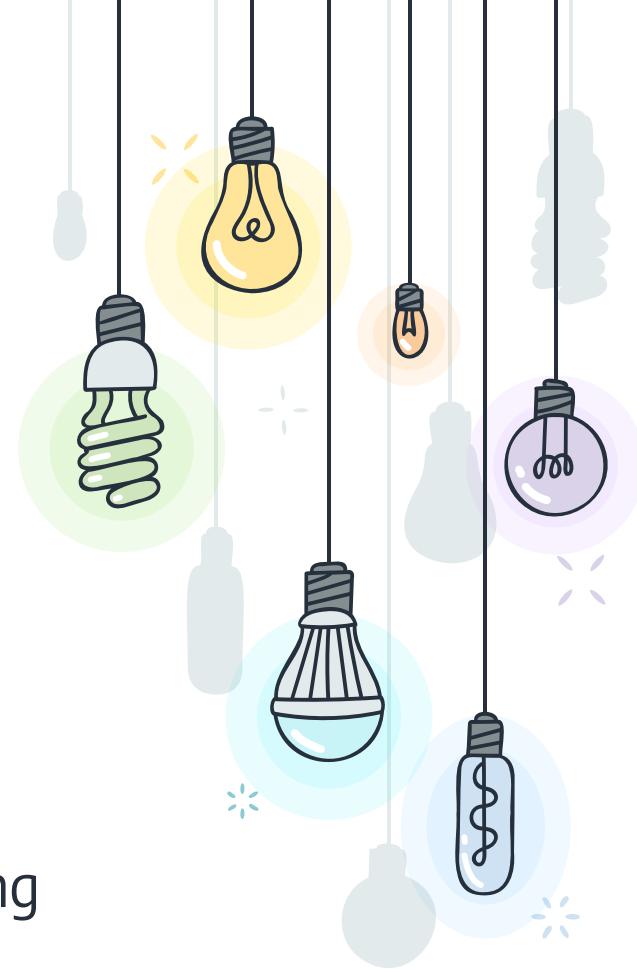
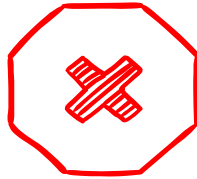
- ❑ The main parking lot is reserved for staff members.
- ❑ The back parking lot and field are available for parent parking.
- ❑ Observe the direction of the painted arrows and keep the traffic flow moving by pulling up in the lane to drop off.
- ❑ While in the drop off lane, have your child exit from the right side of car (curb).
- ❑ Exit at a safe speed



## \* DROP OFF CONT.

### **AVOID**

- ❑ Parking by the dumpsters
- ❑ Parking in the faculty lot
- ❑ Parking in the drop off lane
- ❑ Allow your child to walk across the parking lot (even with you) - Cars have a difficult time seeing little ones.



## \* ATTENDANCE

- ✘ Attendance is MANDATORY per the compulsory attendance law.
- ✘ CHRONIC ABSENTEEISM is defined 15 or more days absent from school for ANY reason. (missing 2 days a month = an entire month of school)
- ✘ Avoid scheduling trips, and other similar activities, during school time.
- ✘ If attendance becomes an issue, you will receive written notice and/or phone calls to conference.



# \* TRAFFIC ADVISORY - SCHOOL START DATES

SCHOOL	START DATE
Mid Pacific	August 14/15
Maryknoll	August 9
Punahou	August 16
UH Mānoa	August 21
Stanford v. UH	Friday, Sept 1 *

# HEALTH & SAFETY

- ✘ Keep your child home if they are sick.
- ✘ Upon returning from illness or injury, see our Health Aide for a readmit slip BEFORE going to class.
- ✘ Noelani does not administer OTC medication (ie. Tylenol, antacids, etc.)
- ✘ For prescribed medication, you must complete paperwork and submit to our SHA.
- ✘ Questions can be directed to our SHA Mira Nakamoto
  - [Healthaide@nes.k12.hi.us](mailto:Healthaide@nes.k12.hi.us) or call (808) 307-8800



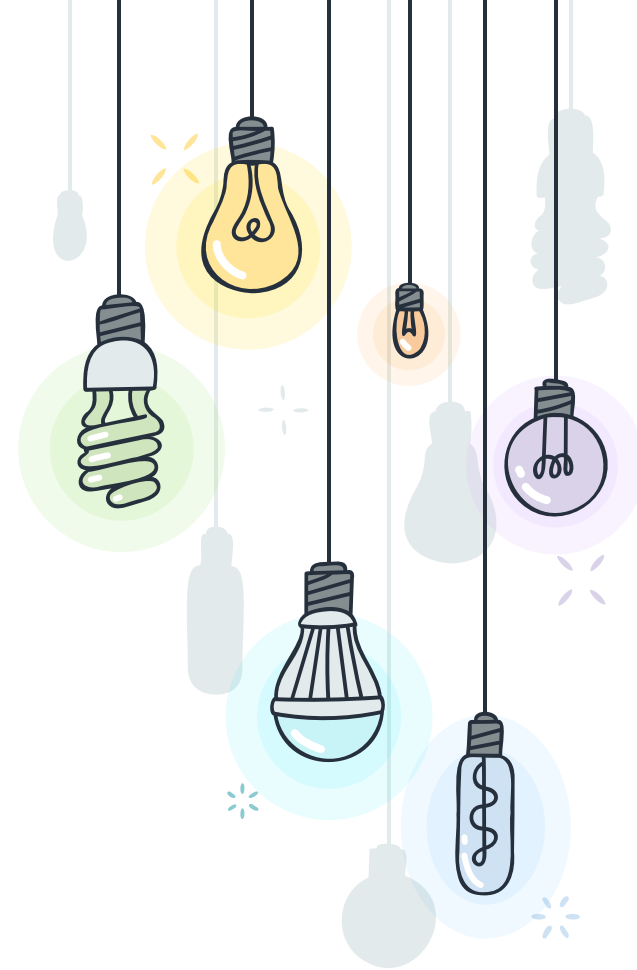
# HEALTH & SAFETY



## \* HEALTH GUIDANCE 23-24

- + Stay up to date with all vaccinations
- + Stay home when sick
- + Test as soon as possible
- + Optimize ventilation
- + Teach, reinforce, and practice proper handwashing
- + Cover coughs and sneezes
- + Mask if you feel it is necessary to do so

**See the health aide if you have any questions**



## \* KEEP YOUR INFORMATION UPDATED

- + Changes to email, phone, or home address should be done in a timely manner.
- + Keep us up to date with student medical issues
- + It would be nice if you provide us copies of any legal matters such as custody, tro's, and the like.





## ✧ VISITOR PROCEDURES

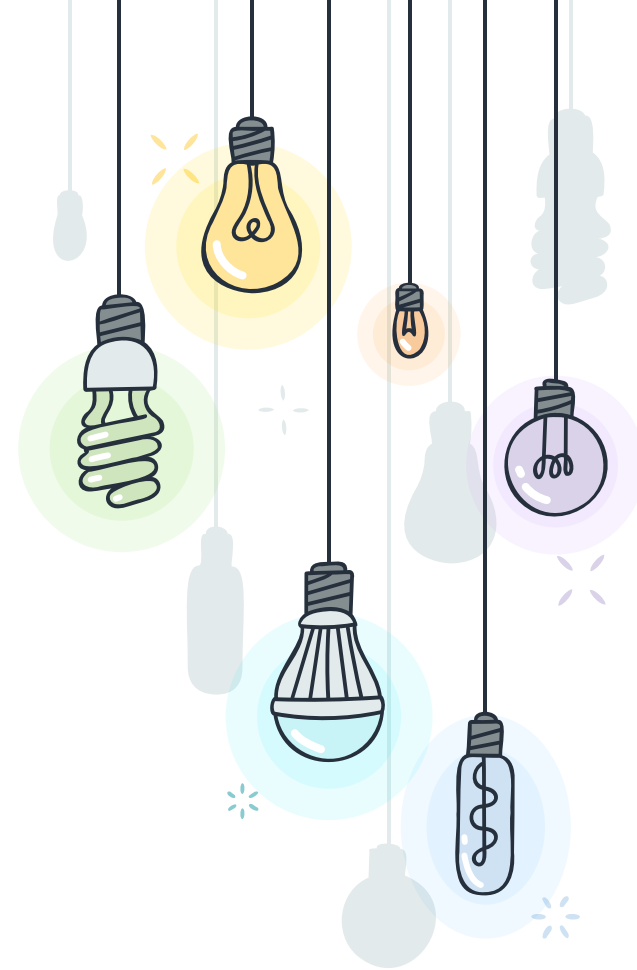
- ★ All visitors must sign in at the office.
- ★ A visitor's badge will be issued.
- ★ During school hours, parents are not allowed in the classrooms to discuss any concerns. Please make an appointment or leave message.
- ★ Students are not allowed to bring friends or relatives to visit the classroom.



## \* CAMPUS / PLAYGROUNDS

The Noelani campus is off-limits to students, parents, and visitors before/after hours, weekends, and holidays.

This includes **fields** and **playgrounds**.

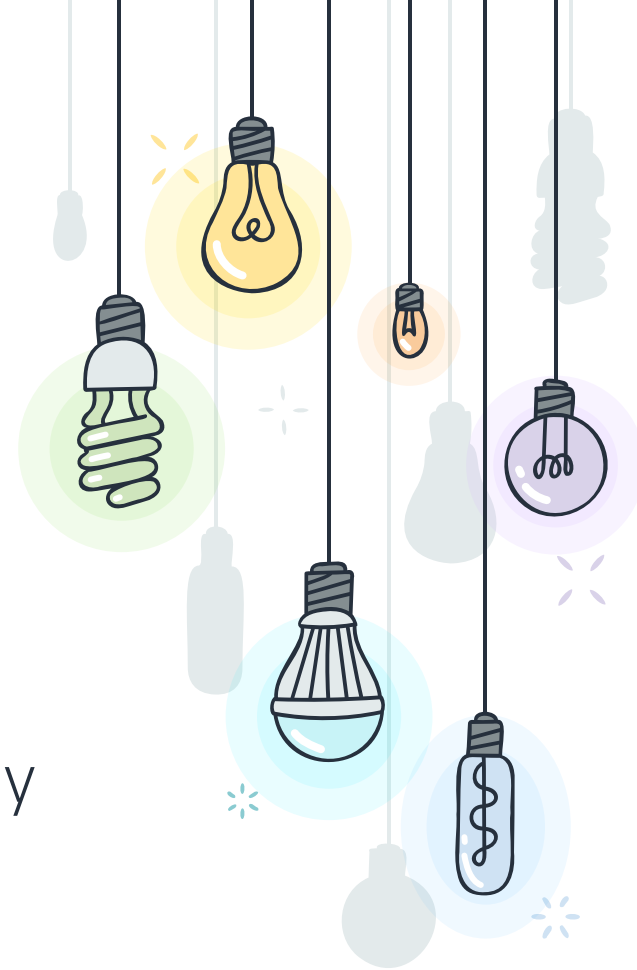


# AFTER SCHOOL



## ❖ AFTER SCHOOL

- ❖ Parents/Guardians can wait near the office until the bell rings.
- ❖ Please do not stand in front, or enter, classrooms until students are dismissed.
- ❖ If you need your child right at the end of school, make prior arrangements for an early dismissal.



## \* PROGRAMS

- ✘ After School Programs
  - A+
    - @ Noelani until 5:30p
    - If you have Free/Reduced meals you can qualify for a lower cost
  - Japanese School
  - Manoa Valley Church
  
- ✘ If students are not enrolled in A+ or an after school program, parents should pick up their child within a reasonable time after school.
  
- ✘ In the event a child has an after school class or tutoring, please arrange for prompt pick up.



## ✨ PICK UP

- ❑ Pre-arrange with your child where you will be.
- ❑ If your child is not on the curb you may be asked to loop around or park to keep the flow of traffic.
- ❑ Let the adults working the pick up line know who you are picking up. A sign with your child's name on the dash is very helpful.
- ❑ Students are not allowed to wait in the Main Office. The best place to wait is in front of the cafeteria.



# MEAL SERVICE



# \* MEAL PRICES

## STUDENT MEALS

### Regular Prices

Breakfast: \$1.10

Lunch: \$2.50

### Reduced Meal Prices

Breakfast: \$0.30

Lunch: \$0.40

**See the office for information to see if your child qualifies for reduced, or free, meals.**

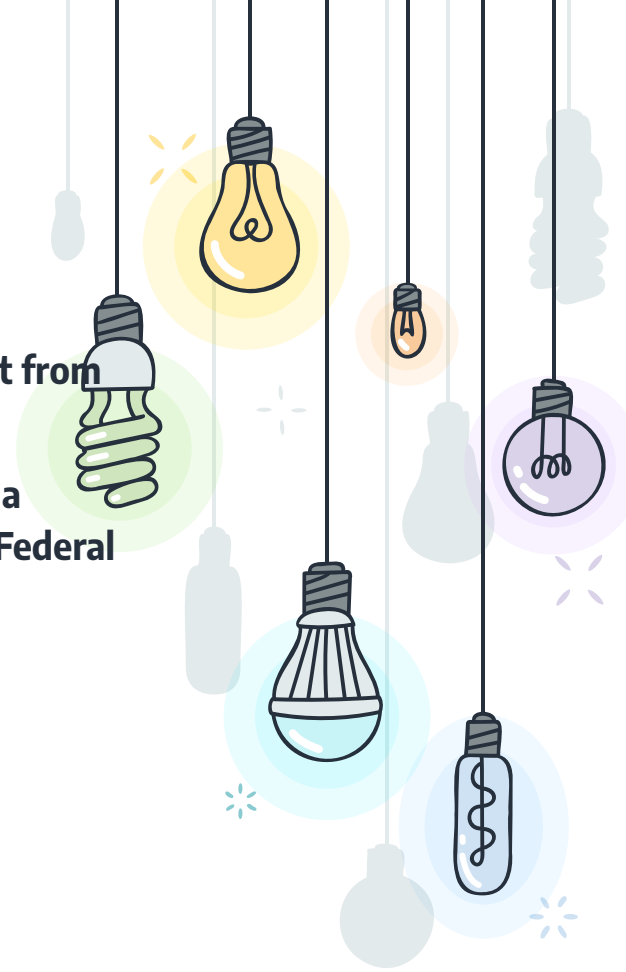
## ADULT MEALS

**You will need to purchase a ticket from the Main Office.**

**Adults are not allowed to eat off a student plate. This is set by the Federal Government.**

Breakfast: \$2.40

Lunch: \$5.50





# Reduced Meals

- All children in households receiving benefits from SNAP or TANF
- Foster children who are under the legal responsibility of a foster care agency
- Children who meet the definition of homeless, runaway, or migrant
- Those who fall at or below the Federal Income Eligibility Guidelines

Household size	Yearly	Monthly	Weekly		Household size	Yearly	Monthly	Weekly
1	\$31,025	\$2,586	\$597		5	\$74,759	\$6,230	\$1,438
2	\$41,958	\$3,497	\$807		6	\$85,692	\$7,141	\$1,648
3	\$52,892	\$4,408	\$1,018		7	\$96,626	\$8,053	\$1,859
4	\$63,825	\$5,319	\$1,228		8	\$107,559	\$8,964	\$2,069

**You must apply for F/R meals each year.  
Go to [ezmealapp.com](https://ezmealapp.com) - to apply**

# Free Meals

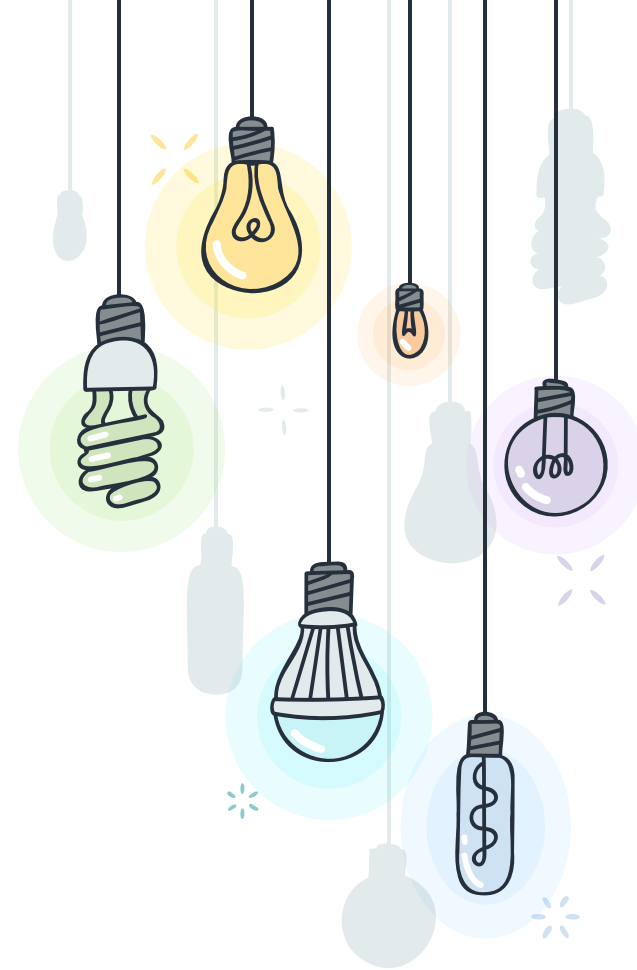
- All children in households receiving benefits from SNAP or TANF
- Foster children who are under the legal responsibility of a foster care agency
- Children who meet the definition of homeless, runaway, or migrant
- Those who fall at or below the Federal Income Eligibility Guidelines

Household size	Yearly	Monthly	Weekly	Household size	Yearly	Monthly	Weekly
1	\$21,801	\$1,817	\$420	5	\$52,533	\$4,378	\$1,011
2	\$29,484	\$2,457	\$567	6	\$60,216	\$5,018	\$1,158
3	\$37,167	\$3,098	\$715	7	\$67,899	\$5,659	\$1,306
4	\$44,850	\$3,738	\$863	8	\$75,582	\$6,299	\$1,454

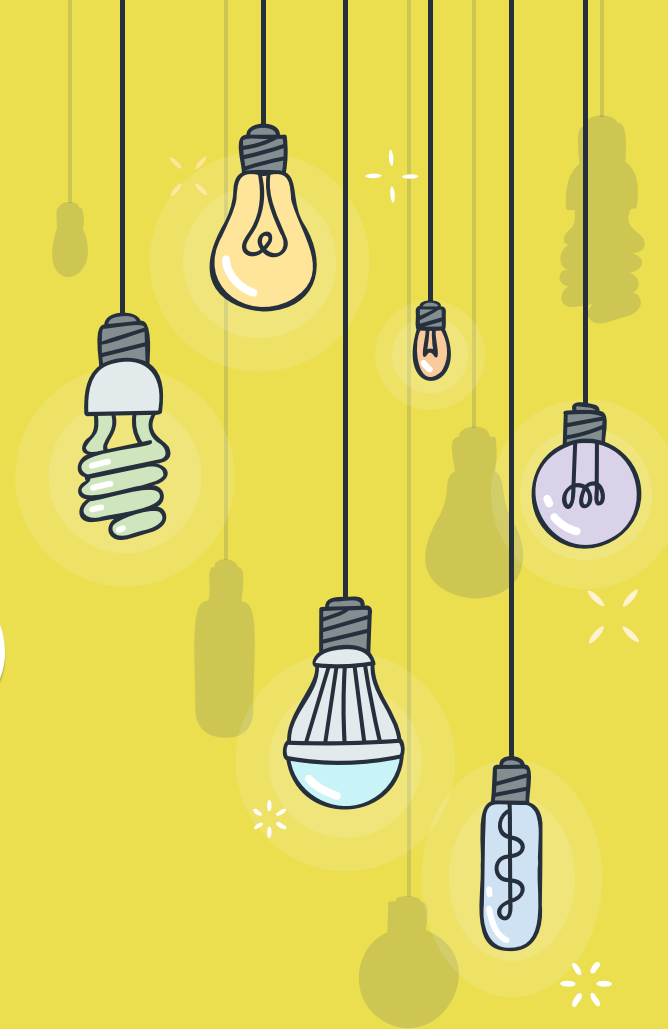
**You must apply for F/R meals each year.  
Go to [ezmealapp.com](https://ezmealapp.com) - to apply**

## ✧ MEAL PAYMENTS

- ★ Cash
- ★ Check/Money Order
  - Payable to “Noelani Elementary School”
- ★ EZSchoolPay.com
  - Credit Card Payments
    - Fee of 1.99% + \$0.13
  - Check balances or set up recurring payments



# SCHOOL RULES & REMINDERS



## \* SCHOOL RULE REMINDERS

- + **Toys, electronics, and other play items** are not allowed in school. We are not responsible for lost/stolen/damaged items.
- + **Cell phones** for emergency use should be kept in your child's bag and not used during the school day.
- + Traverse the campus in a safe manner. Students are not to **run** on the sidewalks.

- + We strive for a **Kind Campus**, so please emphasize the foundations of our CHOOSE LOVE program: Courage, Gratitude, Forgiveness, and Compassion.
- + Bullying or harassment of any kind are not tolerated. Remind your child to seek help from an adult as soon as possible to report the issue.



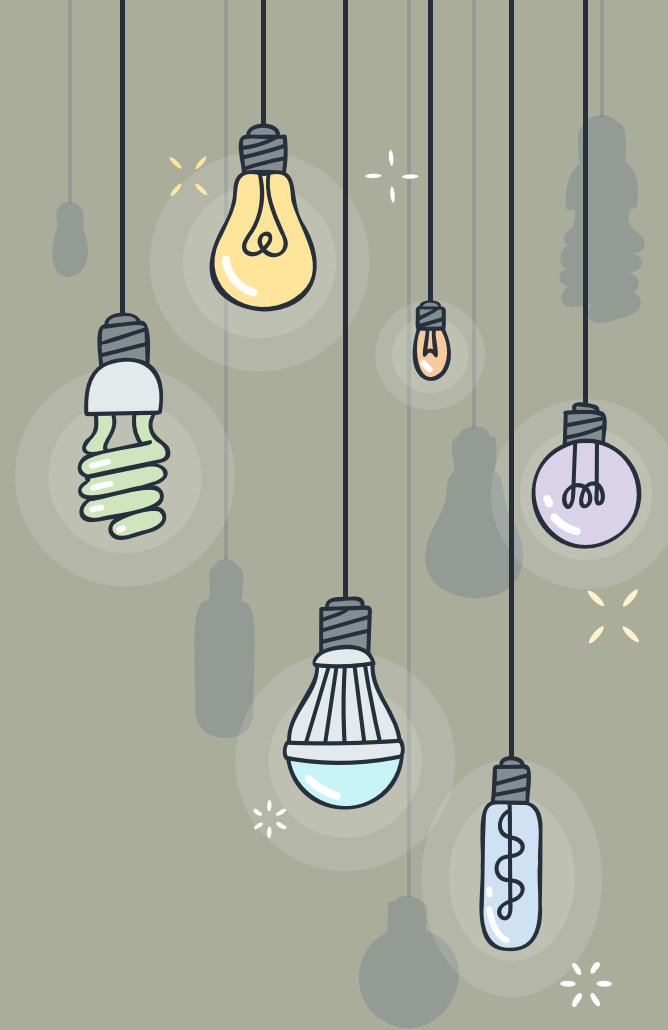
## \* REMINDERS

- + **Privacy** is important - keep in mind the background when taking photos or video
- + **Bicycles** are to be walked on campus and parked in the rack located in the parking lot near the message board.

- + **Lost and Found** is located in the back corner of the cafeteria.
- + It is highly recommended students wear **shoes** to PE and recess.
- + We are a **nut aware** school. Refrain from bringing snacks and home lunch that contain nuts.



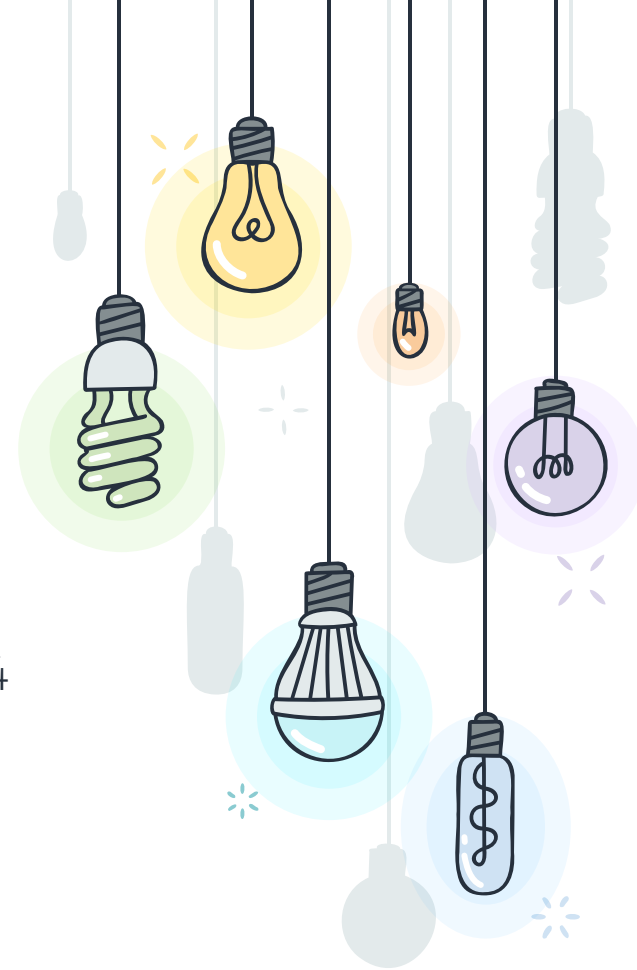
# SCHOOL DAYS HEADS UP



## \* NON-SCHOOL DAYS

- + Typical federal holidays and breaks
  - × Friday after Thanksgiving is also included
  - × Hawaii public schools do not recognize Discover's Day as a holiday.
- + Hawaii holidays
  - × Admissions day 8/18/23
  - × Kuhio day 3/26/24

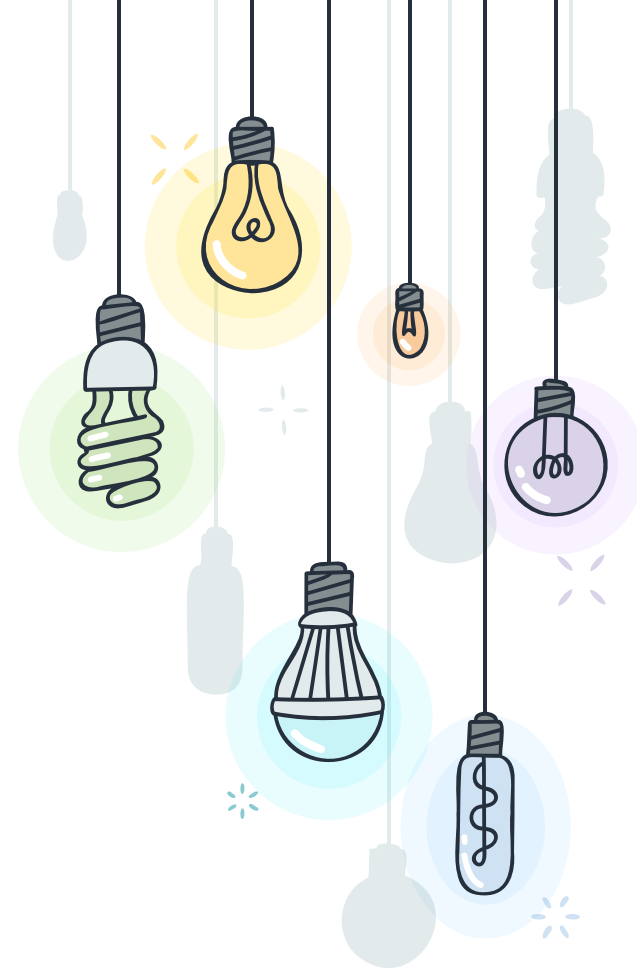
- + School Professional Collaboration Days
  - × 8/28/23
  - × 4/12/24
- + Teacher Institute Day
  - × Week of Feb 12, 2024





## \* PARENT - TEACHER CONFERENCES

- + October 30 - November 9
- + All days are modified to end at 1:30p (Wednesday schedule)
- + Afternoons are for conferences
- + A+ will be available from 1:30p.

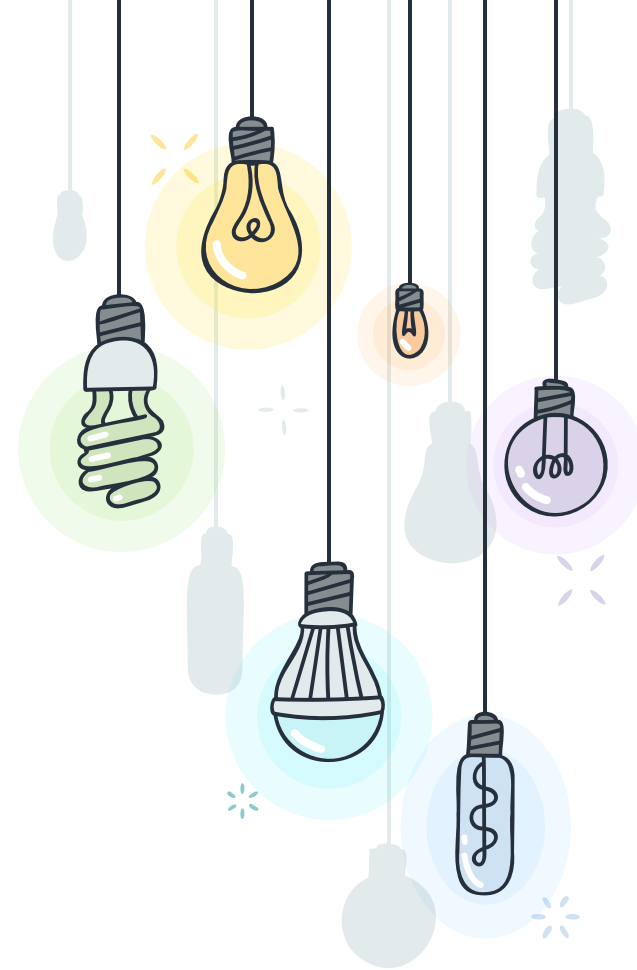


# ROOM PARENTS



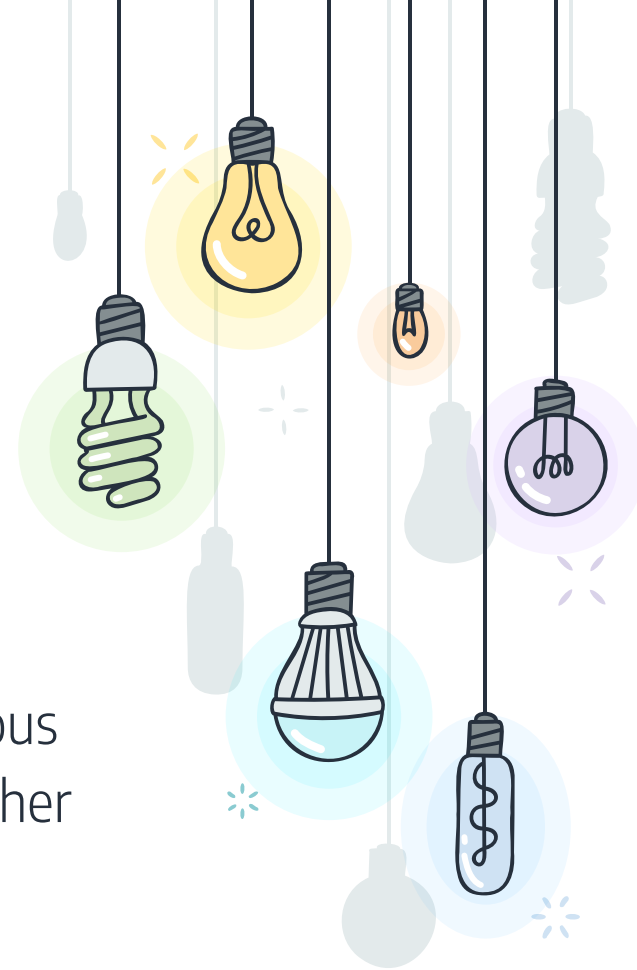
## \* ROLE OF THE ROOM PARENT

- + Assist the classroom teacher with non-instructional activities
- + Assist in communication between the parents and the classroom teacher and PTA



## \* RESPONSIBILITIES

- + Organize a classroom volunteer directory (typically phone or email)
- + Organize class parties/snacks/special activities
- + Organize May Fair Booth (secure volunteers & organize shifts) and
- + Assist with PTA recruitment of volunteers for various fundraising activities as directed by classroom teacher

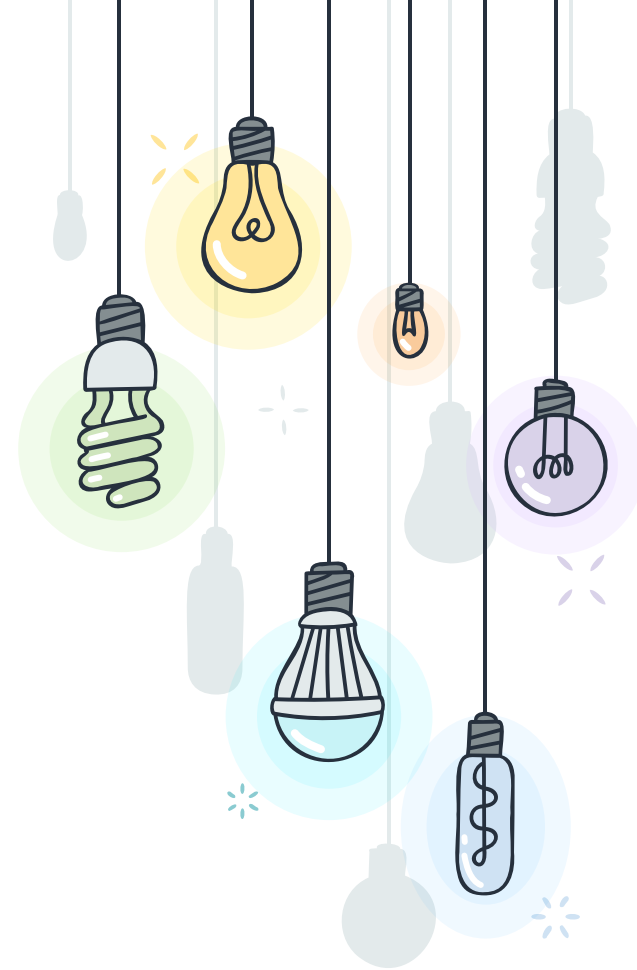


# COMMUNICATION



## \* VISIT OUR WEBSITE FOR...

- + Monthly breakfast and lunch menus
- + School generated forms
- + Registration information for before/after school programs
- + The school calendar
- + Other important announcements



## \* PRINCIPAL COMMUNICATION

- + Typically by email, but sometimes by text
- + Reminders, heads up, celebrations, and emergency situations.
  - × Be sure your information is up to date
- + I also pass along information from groups such as the PTA.



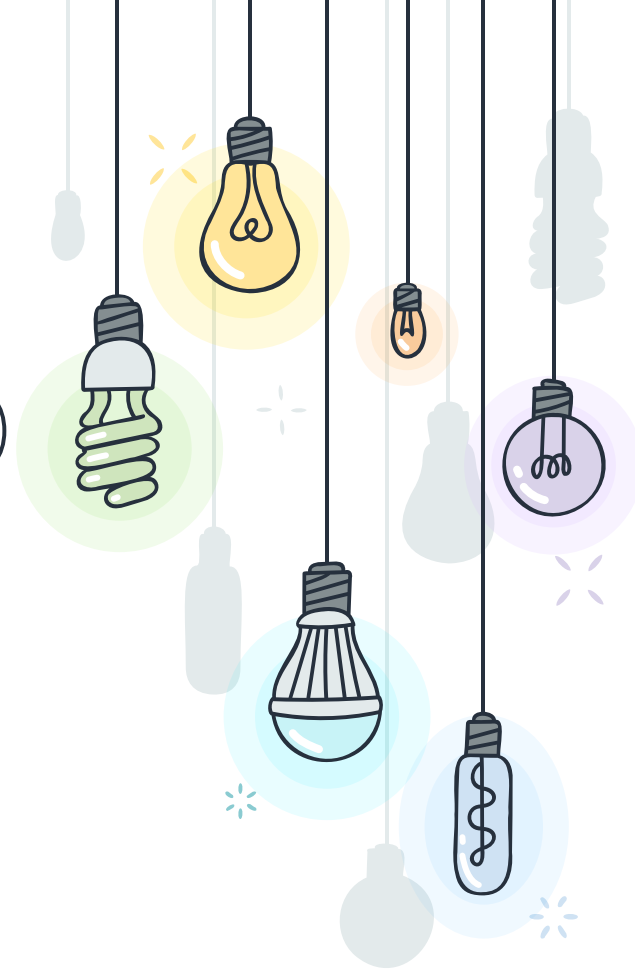
# NOELANI DAY OF SERVICE





## \* FRIDAY, AUGUST 18, 2023

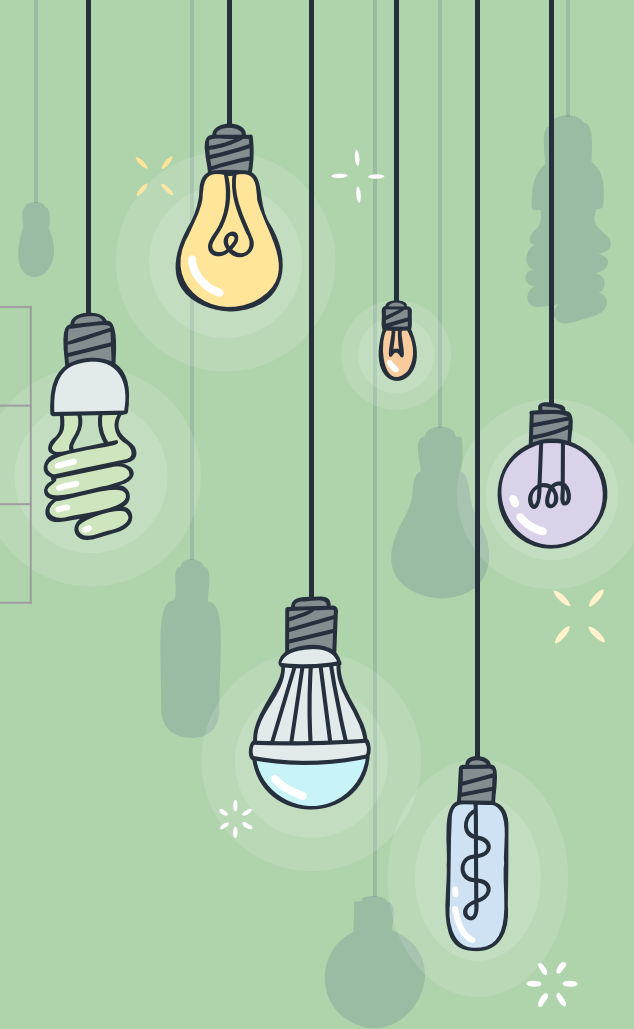
- + 8:00a - 10:00a
- + Weeding (bring tools and gloves if you can)
- + Planting (in anticipation of May Fair Haku)
- + General Campus Clean Up
- + Sign up through the Google Sheet sent via email.

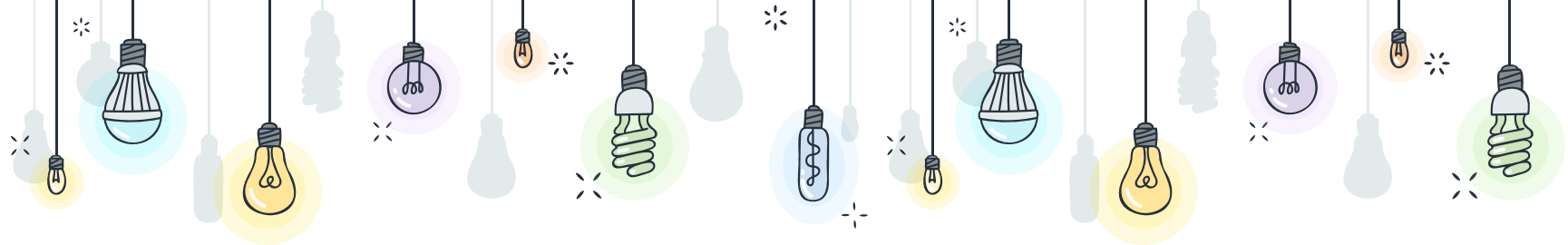


# OPEN HOUSE SCHEDULE

Principal Welcome/PTA Meeting	5:45p - 6:25p
Session 1	6:30p - 6:50p
Session 2	6:55p - 7:15p

Principal Gusman will be at the IDEA Center if you want to stop by and check out the building and/or talk story.





*Thank  
you!*